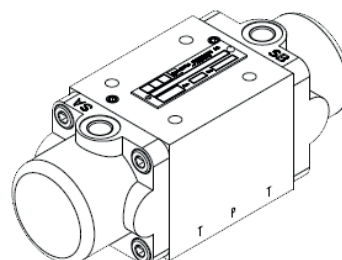
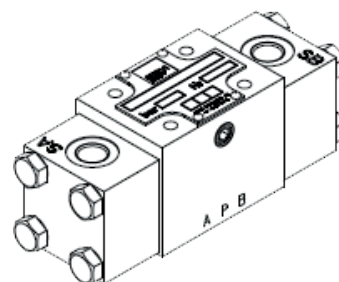


DIRECTIONAL CONTROL VALVES

1STB442*

Hydraulically operated directional control valves size NG6/NG10 for rough environments

- Size according to ISO 4401
 - ISO 03 (NG6)
 - ISO 05 (NG10)
- Remote controlled by pilot pressure
- Six standard spools



DESCRIPTION		DATA
Max flow	ISO 03 (NG6)	25 l/min
	ISO 05 (NG10)	50 l/min
Weight	ISO 03 (NG6)	1.8 kg
	ISO 05 (NG10)	4.2 kg
	ISO 08 (NG25)	17 kg
Max pressure	P, A, B, T	350 bar
	SA/SB NG6	250 bar
	SA/SB NG10	160 bar
Pilot pressure		6 bar
Test pressure		420 bar
Fluid temperature range		-20°C to +70°C
Ambient temperature range		-20°C to +50°C

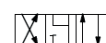
1STB442* - STANDARD SPOOL SYMBOLS


01

02

03

06

Y3

2C