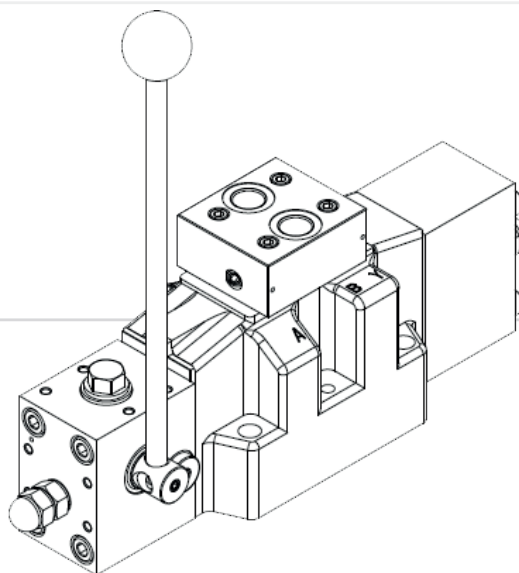


DIRECTIONAL CONTROL VALVES

1STB44*

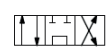

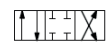
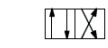


Manually operated directional control valves size NG10/16/25 for rough environments

- Size according to ISO 4401
 - ISO 05 (NG10)
 - ISO 07 (NG16)
 - ISO 08 (NG25)
- Manually operated
- Six standard spools
- Option
 - Brake release valve
 - Proportional hydraulic remote control
 - Proportional remotely controlled



DESCRIPTION	DATA	
Max flow	ISO 05 (NG10)	100 l/min
	ISO 07 (NG16)	300 l/min
	ISO 08 (NG25)	500 l/min
Weight	ISO 05 (NG10)	3.3 kg
	ISO 07 (NG16)	10 kg
	ISO 08 (NG25)	17 kg
Max pressure	P, A, B	350 bar
	T	100 bar
	T (ext. y)	250 bar
Pilot pressure	5-20 bar	
Test pressure	420 bar	
Fluid temperature range	-20°C to +70°C	
Ambient temperature range	-20°C to +50°C	

1STB44* - STANDARD SPOOL SYMBOLS

	01
	02
	03
	06
	Y3
	2C