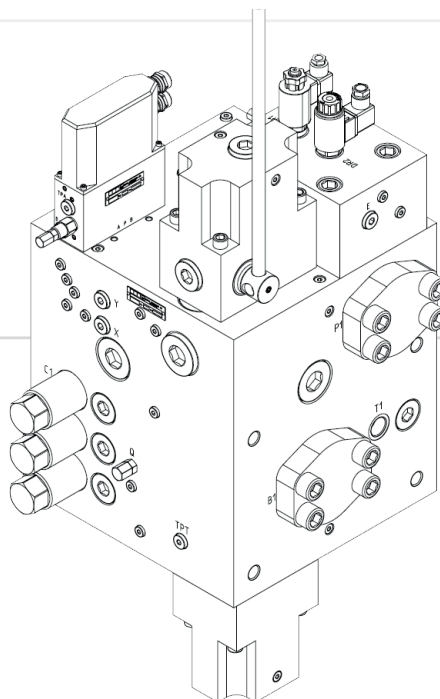


MODULAR WINCH UNITS

6MB-1500 for flow 800-1500

Winch control manifolds for variable pumps

- Pipe mounted model
- Compact design
- Pressure compensator system for load independent control of hydraulic motor
- Load control valve of poppet/spool design
- High capacity pressure relief for tension operations
- Actuations
 - Manual
 - Hydraulic remote
 - Proportional electric operation
 - Combination of those above
- Options
 - Brake release valve
 - Remote operated pressure relief A - B for tension control
 - Up to 5 NG6 flanges for operation of external functions



DESCRIPTION		DATA
Flow ranges		800 - 1500 l/min
Weight		425 kg
Max pressure	P, A, B	350 bar
	T	20 bar
	D	10 bar
Pilot pressure		5-20 bar
Test pressure		420 bar
Fluid temperature range		-20°C to +70°C
Ambient temperature range		-20°C to +50°C

