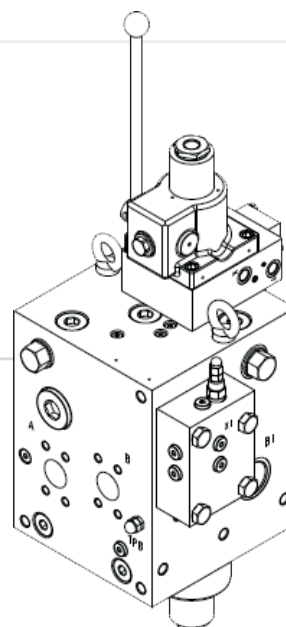


MODULAR WINCH UNITS

VB40 for nominal flow 900

Winch control manifolds for fixed pumps

- Pipe mounted model
- Compact design
- Load control valve of spool design
- High capacity pressure relief for tension operation
- Actuations
 - Manual
 - Hydraulic remote
 - Combination of those above
- Options for
 - Brake release valve
 - Remote operated pressure relief A - B for tension control



DESCRIPTION		DATA
Flow ranges	40	900 l/min
Flow range pressure cartridge A - B		1800 l/min
Weight basic version	40	158 kg
Max pressure	Description	207 bar
	L	10 bar
Pilot pressure		5-30 bar/8-45 bar
Test pressure		350 bar
Fluid temperature range		-20°C to +70°C
Ambient temperature range		-20°C to +50°C

