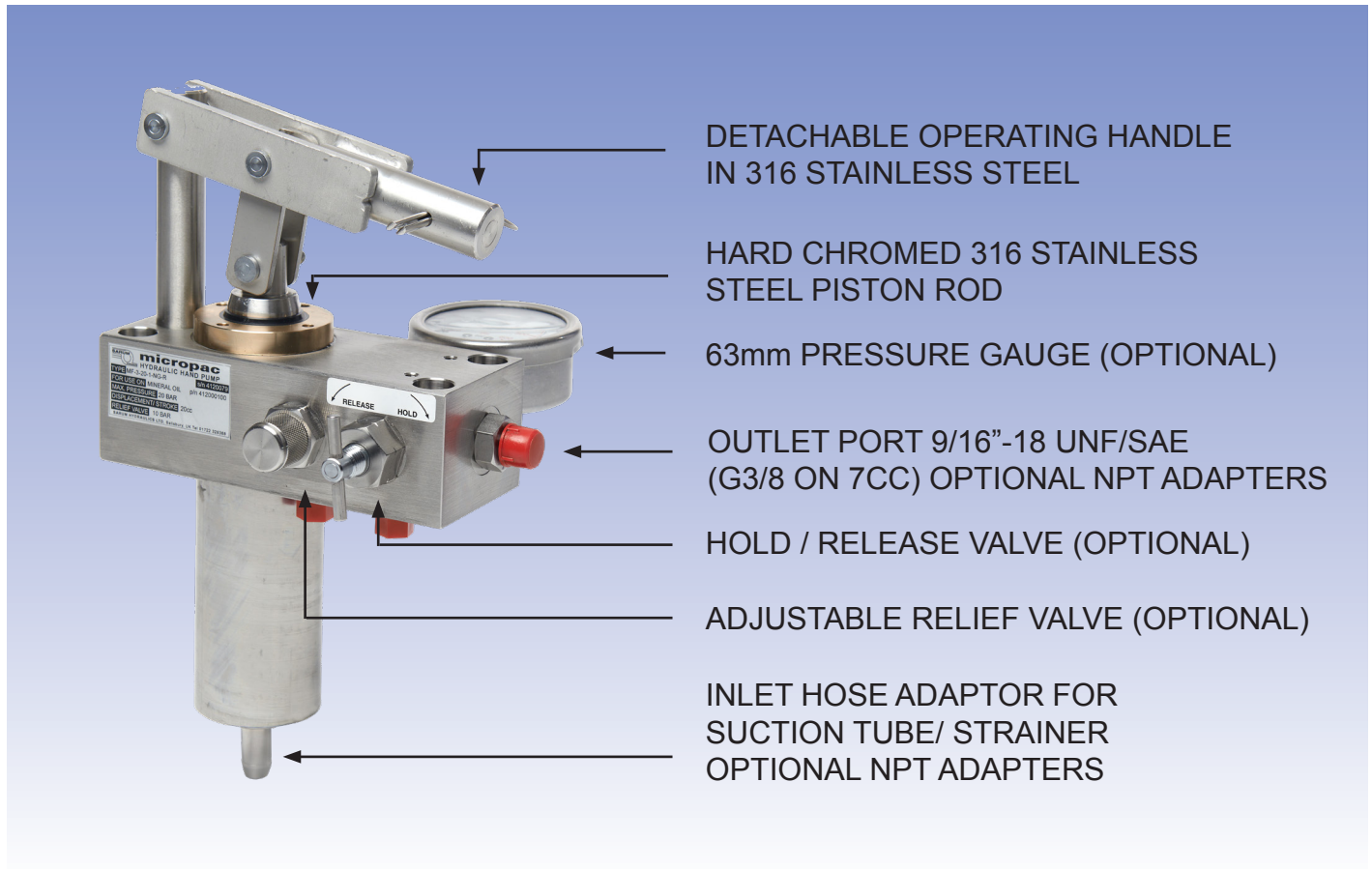




SARUM
HYDRAULICS
Designers & Manufacturers of Hydraulic Equipment

Micropac® 316/1.4404 Stainless Hydraulic Hand Pump

A quality engineered hand pump for long life and low corrosion



DETACHABLE OPERATING HANDLE
IN 316 STAINLESS STEEL

HARD CHROMED 316 STAINLESS
STEEL PISTON ROD

63mm PRESSURE GAUGE (OPTIONAL)

OUTLET PORT 9/16"-18 UNF/SAE
(G3/8 ON 7CC) OPTIONAL NPT ADAPTERS

HOLD / RELEASE VALVE (OPTIONAL)

ADJUSTABLE RELIEF VALVE (OPTIONAL)

INLET HOSE ADAPTOR FOR
SUCTION TUBE/ STRAINER
OPTIONAL NPT ADAPTERS

TYPICAL APPLICATIONS: ACTUATION, OVER-RIDES AND SHUTDOWN SYSTEMS,
PRESSURE TESTING, FILLING AND CHARGING
MULTI FLUID USE ON "SKYDROL" AND OTHER SPECIALIST MEDIA. SEALS EASILY
CHANGED. UNIVERSAL MOUNTING ORIENTATION.

FEATURES

- Rugged construction with dirt excluder
- Universal fluid compatibility:
Oil, Water, Glycols and other fluids
- Suitable for extreme applications
- 316/1.4404 stainless/bronze for low corrosion
- Hard chrome plated 316 piston rod for long life
- Poppet outlet check valve for very low leakage
- Soft seat inlet and release valves for reliability
- All valve seats replaceable for long service life
- Excellent Engineering support over its life
- PTFE wear strips for low friction
- Five models for optimum application;
 - 7cc/stroke to 700 bar
 - 12cc/stroke to 407 bar
 - 25cc/stroke to 207 bar
 - 49cc/stroke to 102 bar
 - 100cc/stroke to 50 bar
- Double acting - pumps on up and down stroke
- Optional fixed and portable reservoirs
- Nitrile seals standard - optional EPDM / Viton®

INSTALLATION & MAINTENANCE

APPLICATION

The unit provides manual hydraulic power for a range of applications and on multiple fluids including glycols and skydrol. Because of our use of soft seat and poppet valves, the unit is suitable for hydraulic fluids including low viscosity types such as water-in-oil emulsions and offshore control liquids. Standard seals are nitrile rubber. Consult factory for special seal requirements for other fluids, including Viton®, EPDM and specialist aerospace/process compounds

MATERIALS

The materials of construction are 316/1.4404 stainless steel, CW307G bronze and small amounts of 303, 304, 420 & 431. Seals are PTFE, UHMWP and nitrile.

DISPLACEMENT

The unit is available in five displacement / pressure ratings, 7cc/700 bar, 12cc/407 bar, 25cc/207 bar, 49cc/102 bar and 100cc/50 bar.

COMMISSIONING

Operate hand pump and pressurise to maximum pressure. Check for leaks in the system. Set relief valve (if required).

CONNECTIONS

The unit has a 9/16 UNF SAE female thread on the outlet port (G3/8 on 7cc unit) fitted with a 1/4 BSP male coned outlet adapter. Make a connection to this with an appropriate adaptor or fitting. Where applicable, the auxiliary port will be plugged or fitted with a pressure gauge. The gauge port is G1/4(BS2779) flat bottom. The inlet hose tail suits 9.52mm flexible tube (12mm on 100cc). We supply an inlet strainer/tube, a gasket and mounting screws with the unit. 3/8 NPT female adapters are a standard option. We can offer other inlet and outlet terminations. A 9.52mm standpipe can be fitted to the inlet for easy piping into a system.

Note the gauge uses 316 wetted parts but a 304 stainless case. An all 316 stainless gauge is available. Contact the factory.

MAINTENANCE

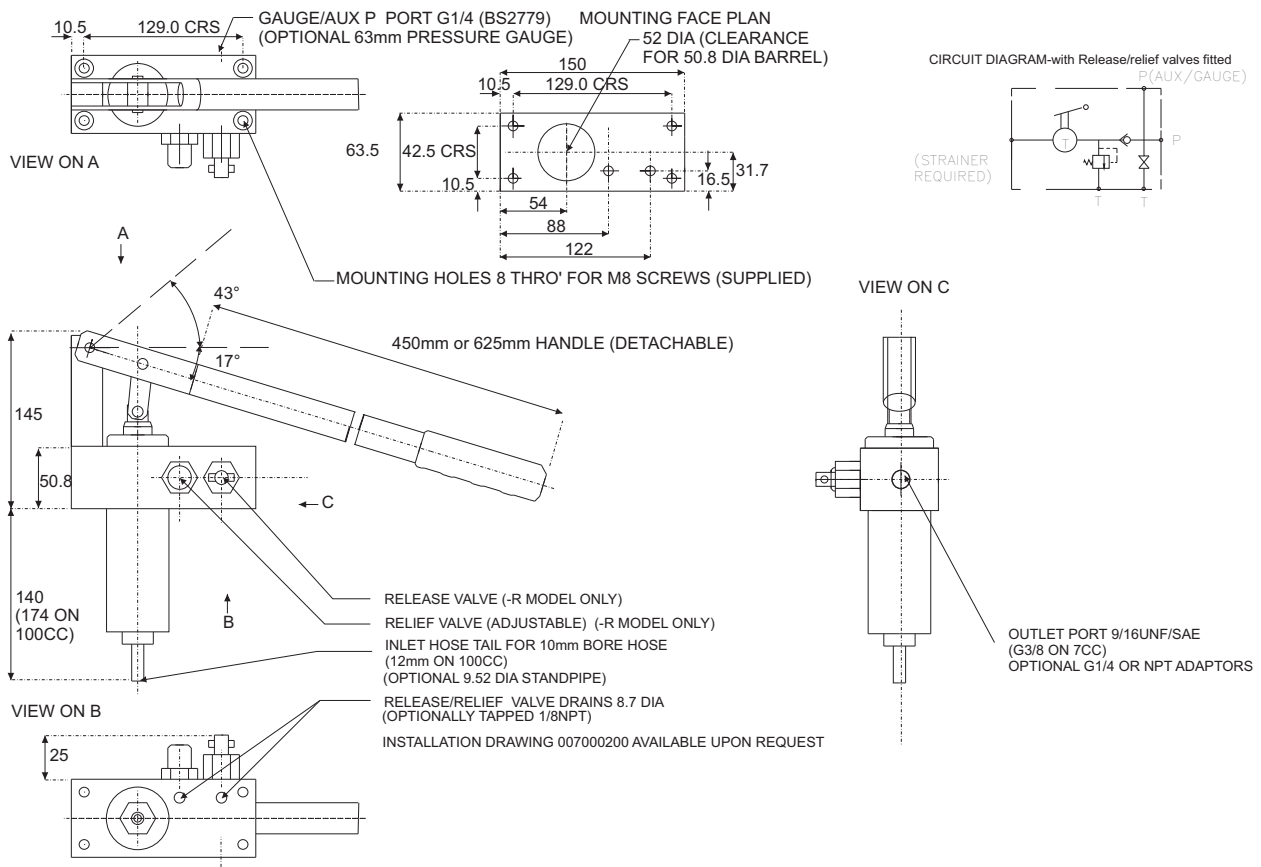
The inlet and outlet check valves are easily serviced and use replaceable seats. Service kits are available comprising all seals, seats, balls and springs.

SAFETY

This pump is a component forming part of a hydraulic pressure system. The system should be designed, operated and maintained in accordance with statutory requirements and other relevant instructions.

DIMENSIONS

ALL DIMENSIONS IN mm



ORDER SHEET FOR MICROPAC® 316 STAINLESS HAND PUMP



SARUM
HYDRAULICS
Designers & Manufacturers of Hydraulic Equipment

Model	
Body Material	See page 2 for full materials description.
3	Stainless 316
Displacement	
07	7cc / 700 BAR
12	12cc / 407 BAR
25	25cc / 207 BAR
49	49cc / 102 BAR
10	100cc/50 BAR
Handle	
4	450mm Short
6	625mm Long
O	No Handle
Seal Material	
N	Nitrile/Buna n
V	"Viton" Fluorocarbon
E	EPDM for "Skydrol"
S	Special
Test Fluid	
W	Water
O	Oil
S	Special
Release Valve	
O	No Release
R	Normal
S	Special
Pressure Gauge	
O	No Gauge
G	Normal
S	Special
Relief Valve	
O	No Relief
R	Normal
S	Special
Special Requirements	
-	None
OS	Offshore External Trim
AX	ATEX upgrade

*Standard gauge uses 316 connector, wetted parts and a 304 case. Contact the factory if you require an "all 316" pressure gauge.

Gauge, release valve and relief valve are set to the maximum working pressure of the pump as standard.

MW 3

For special options, please consult factory.

We invest heavily and continuously in product development. Specifications are therefore liable to change without prior notification. ©Micropac is a Registered Trade Mark of Sarum Hydraulics.

Sarum Hydraulics Limited
Unit 1 Danebury Court, Salisbury SP4 6EB, UK
Tel: 44(0)1722 328388 Fax: 44(0)1722 414307
email: pumpsales@sarum-hydraulics.co.uk
www.sarum-hydraulics.co.uk



SARUM
HYDRAULICS
Designers & Manufacturers of Hydraulic Equipment