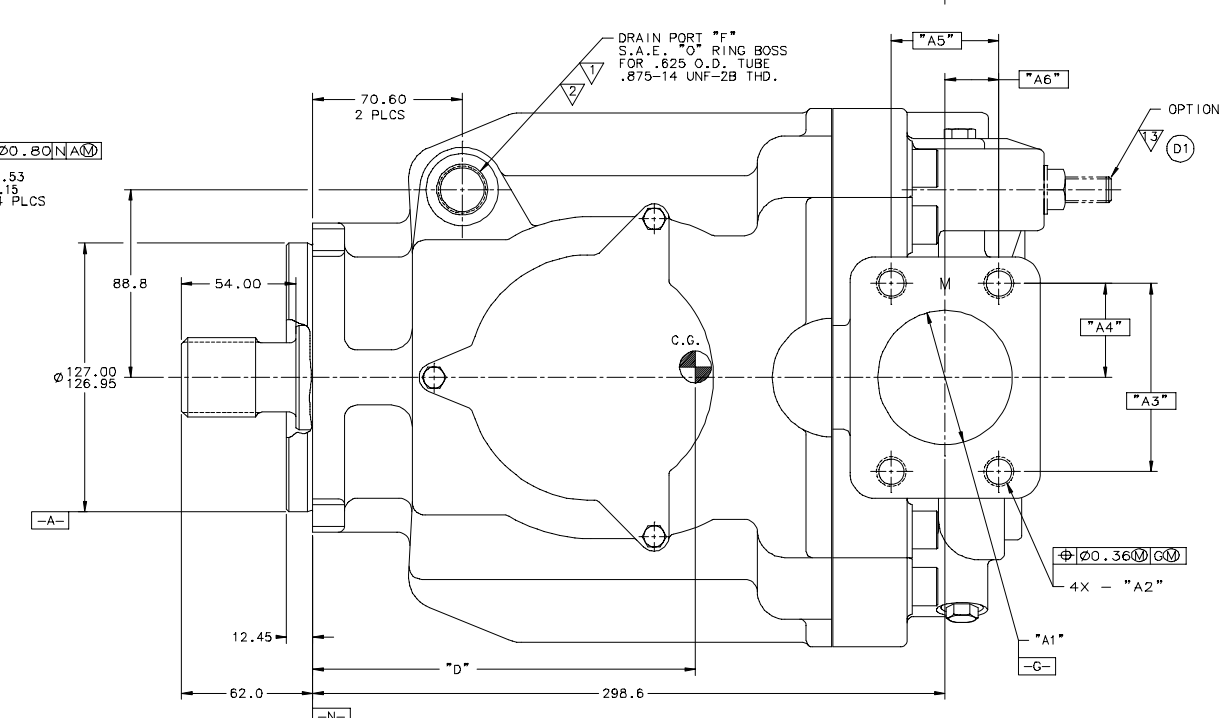
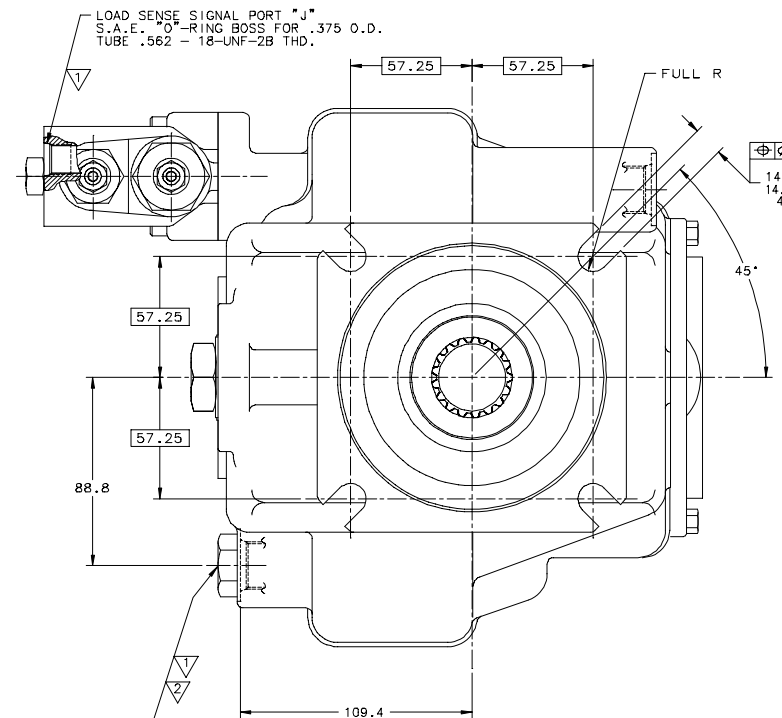
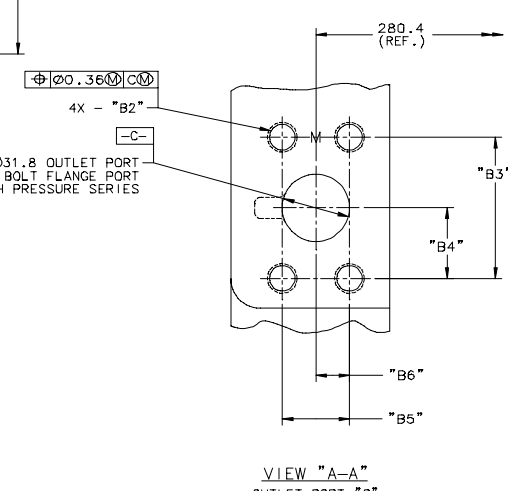
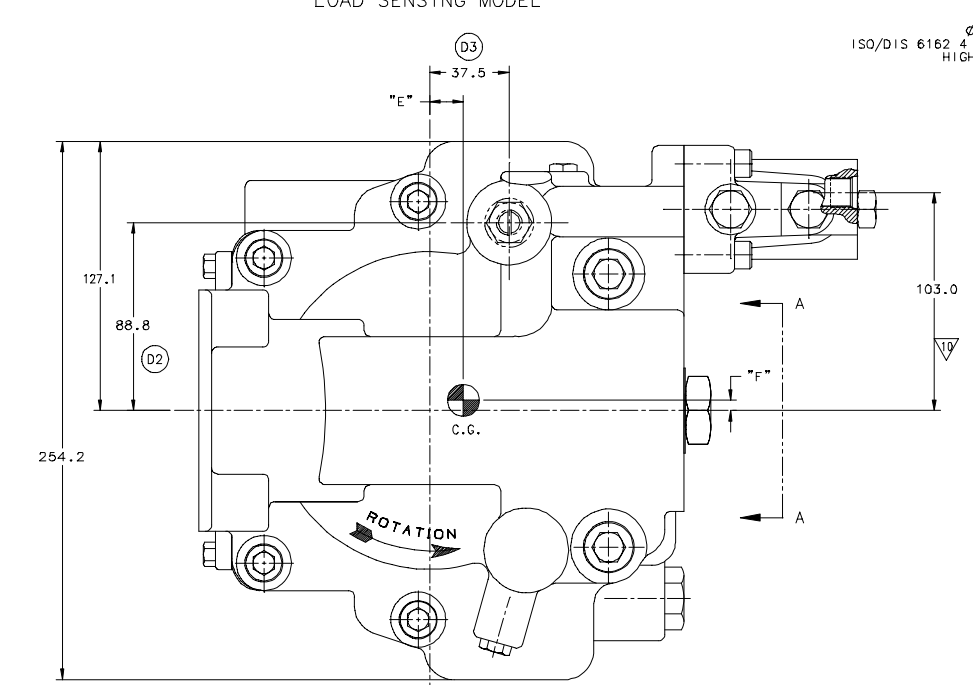
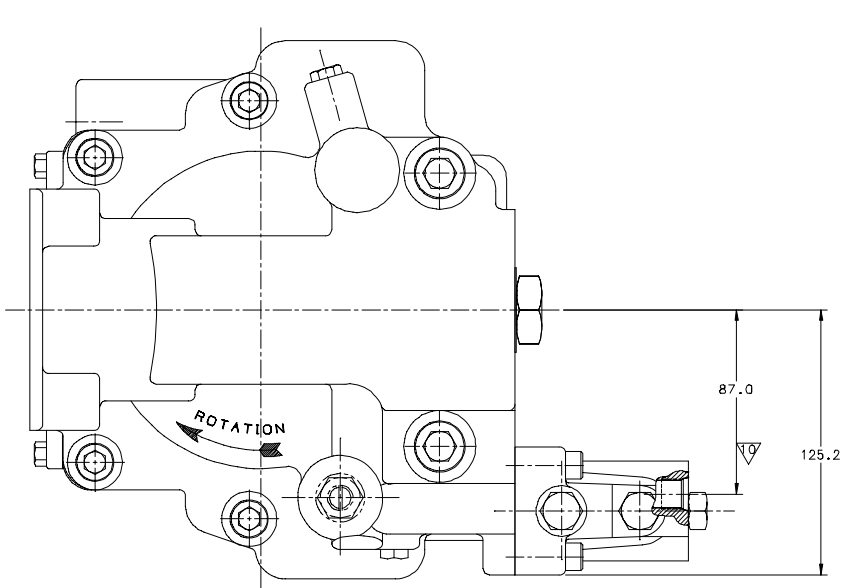
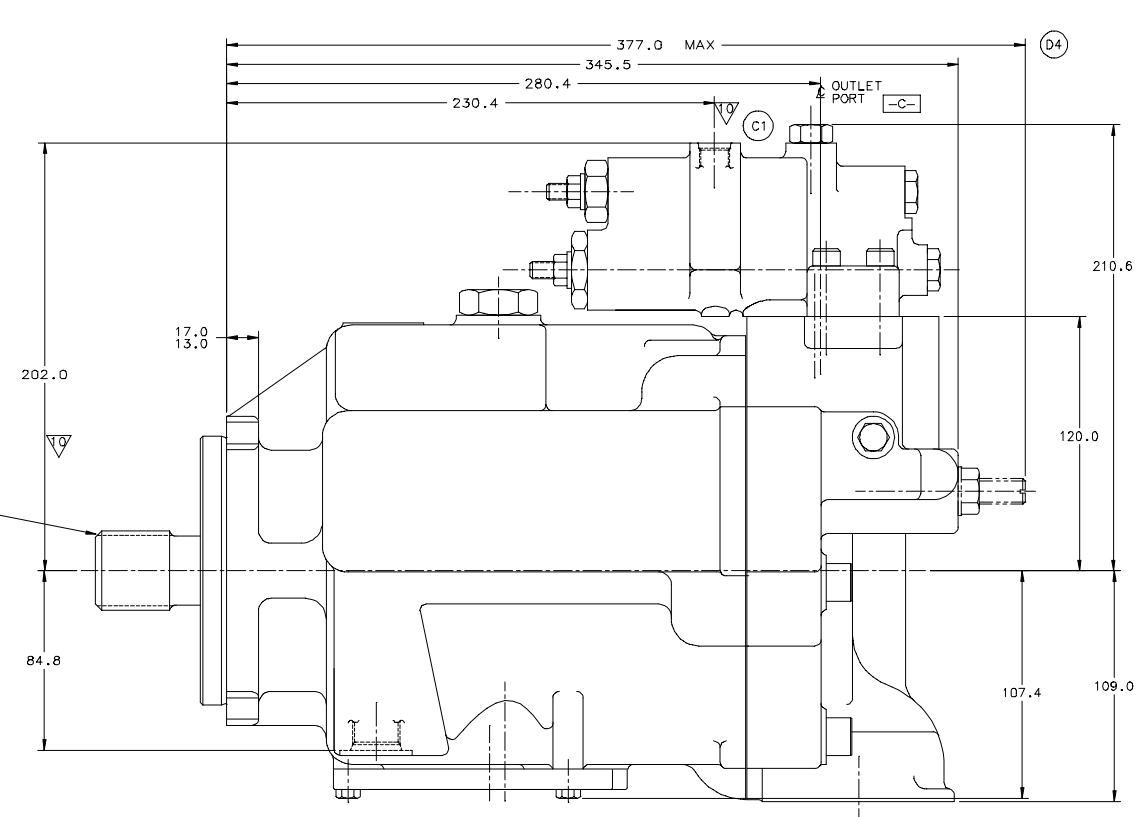


EXTERNAL INVOLUTE SPLINE			
ASA B5.15-1960			
1.4187 PITCH DIA.	1.2269 BASE DIA.	SIDE FIT	
FLAT ROOT			
17 TEETH	12 / 24 PITCH	30° PR. ANGLE	
MAJOR DIA.	FORM DIA.	MINOR DIA.	
1.4793 MAX.	1.3297	1.3128 MAX.	
1.4730 MIN.		1.2997 MIN.	
CIRCULAR TOOTH THICKNESS			
.1294 MAX. EFF.	.1277 MAX. ACT. REF.		
.1281 MIN. EFF. REF.	.1264 MIN. ACT.		
MEASUREMENT OVER DIA. PINS			
MAX. REF.	MIN. REF.		

SPLINE CODE NUMBER: #3 SHAFT SPLINE DATA



	"A1"	"A2"	"A3" BASIC	"A4" BASIC	"A5" BASIC	"A6" BASIC	"B1"	"B2"	"B3" BASIC	"B4" BASIC	"B5" BASIC	"B6" BASIC
INCH PORTS	Ø3.5 INLET PORT "B" SAE J518C 4 BOLT FLANGE PORT STANDARD PRESSURE SERIES	.500-13UNC-2B THD. 1.19 DEEP MIN.	88.90	44.45	50.80	25.40	Ø31.75 PORT "C" SAE J518C 4 BOLT FLANGE PORT HIGH PRESSURE SERIES	.500-13UNC-2B THD. 1.00 DEEP MIN.	66.68	33.34	31.75	15.88
METRIC PORTS	64 SIZE INLET PORT "B" ISO/DIS 6162 4 BOLT FLANGE STANDARD PRESSURE SERIES	M12 THREAD 31.0 DEEP MIN.	89.90	44.45	50.80	25.40	32 SIZE OUTLET PORT "C" ISO/DIS 6162 4 BOLT FLANGE HIGH PRESSURE SERIES	M14 THREAD 27.0 DEEP MIN.	66.70	33.35	31.75	15.88

REV	DESCRIPTION	DATE	APPROVED
A	REVISED AND REWORK	1/30/79	S.L. MOON
B	REVISED AND REWORK	2/24/79	N.B.
C	REVISED AND REWORK	5/1/79	L.V.
D	REVISED AND REWORK	8/28/79	N. MOON
E	REVISED AND REWORK	1/16/80	J.T.L.

855703

INSTALLATION VARIABLE DISPLACEMENT PISTON PUMP

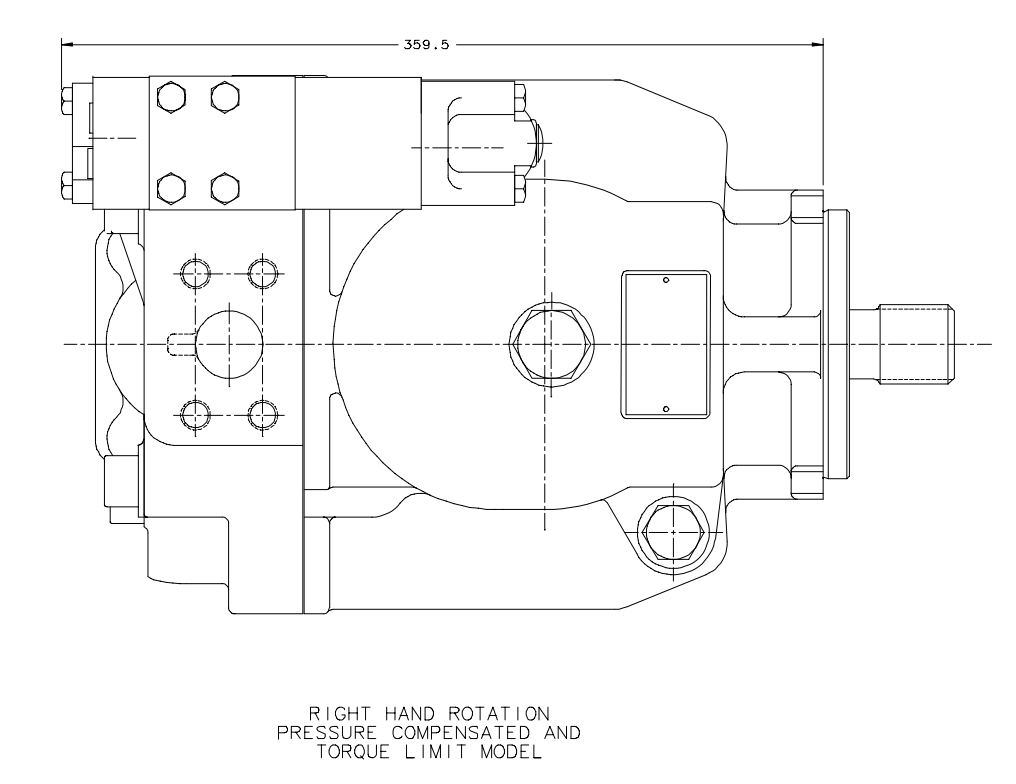
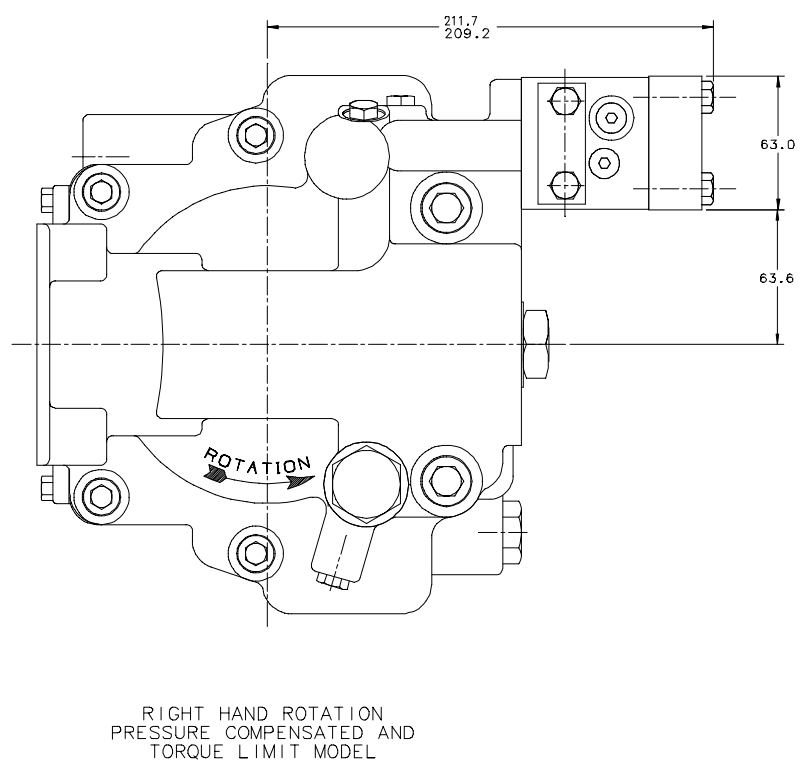
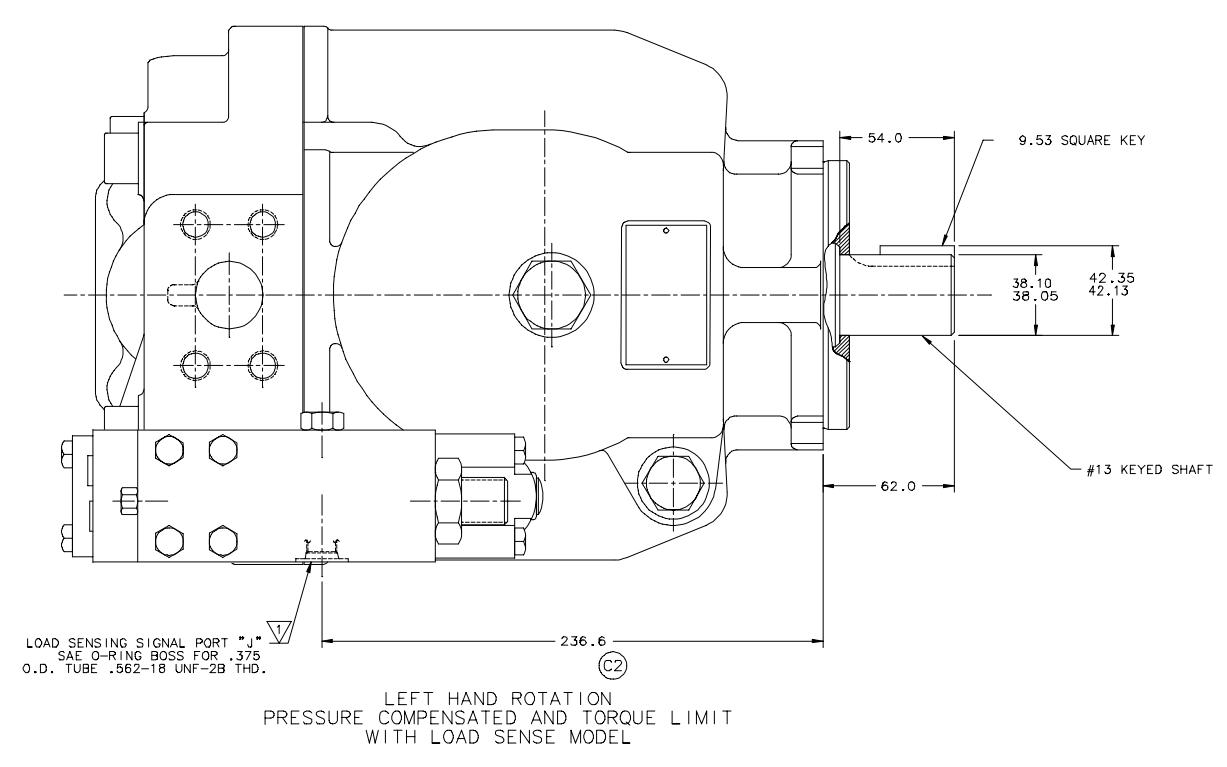
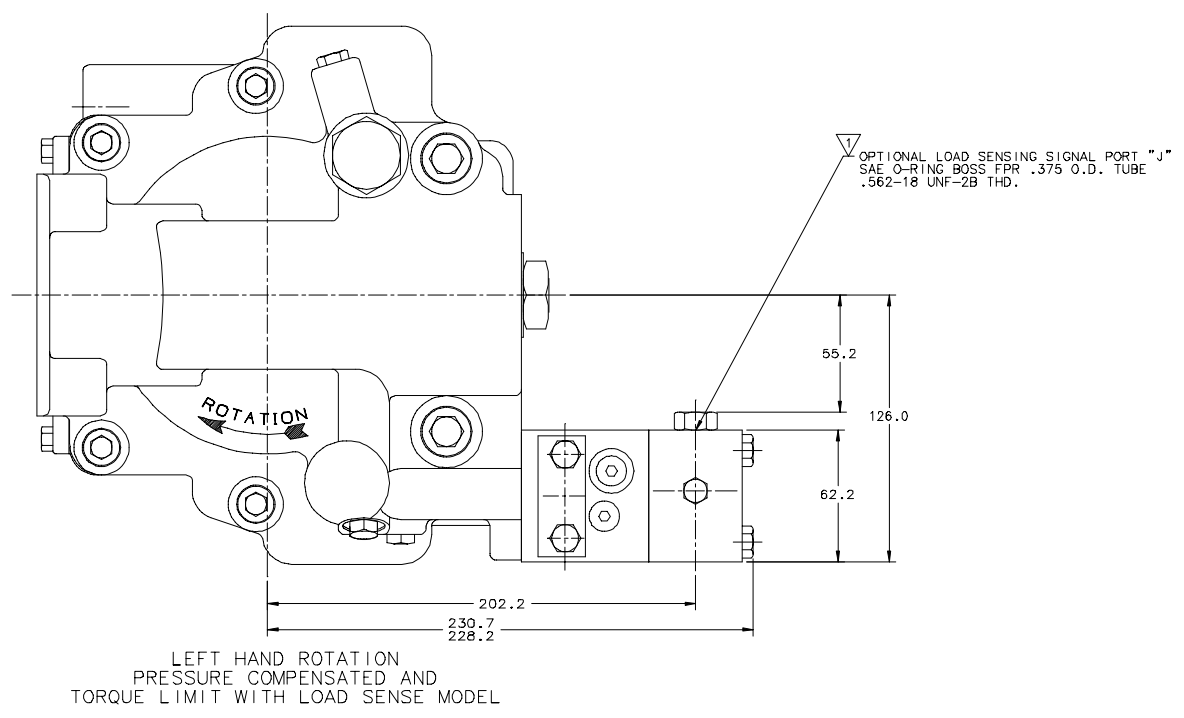
855703

SCALE 1/1 IN

1 OF 4

14 13 12 11 10 9 8 7 6 5 4 3 2 1

REV	DESCRIPTION	DATE	APPROVED
A	REVISED AND REWORKED	5/21/98	S. J. KELLY
B	REVISED AND REWORKED (S.C.)	5/21/98	S. J. KELLY
C	REVISED AND REWORKED	5/21/98	S. J. KELLY
D	REVISED AND REWORKED	5/21/98	S. J. KELLY
E	REVISED AND REWORKED	5/21/98	S. J. KELLY
1A	REVISED AND REWORKED (S.C.)	5/21/98	S. J. KELLY



855703

855703

INSTALLATION
VARIABLE DISPLACEMENT
PISTON PUMP

855703

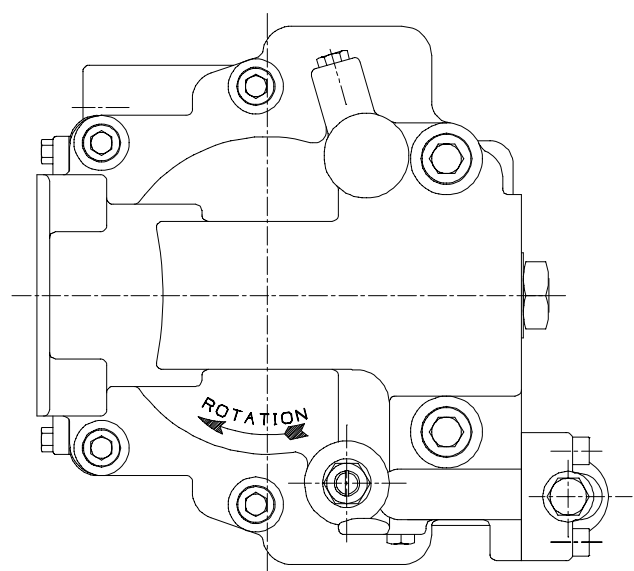
SCALE 1/1 IN

SHEET 2 OF 4

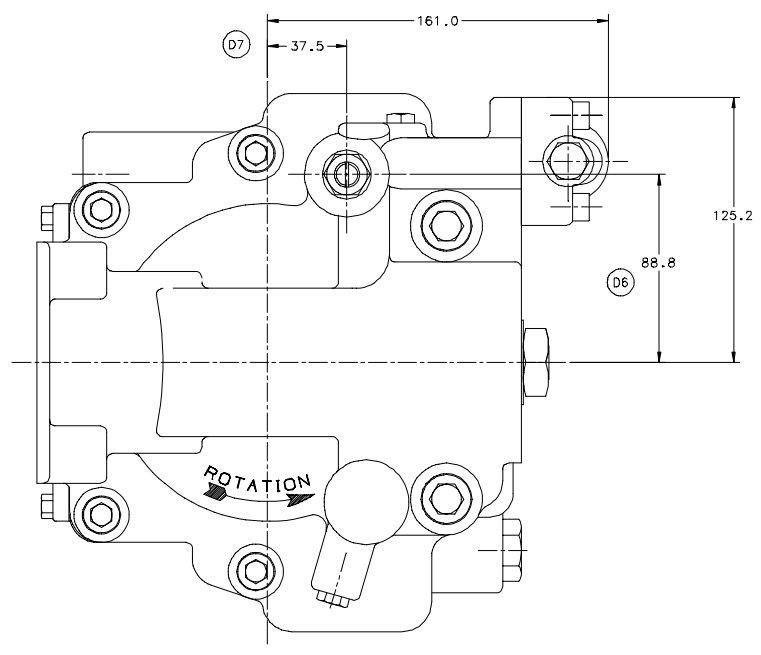
H G F E D C B A

14 13 12 11 10 9 8 7 6 5 4 3 2 1

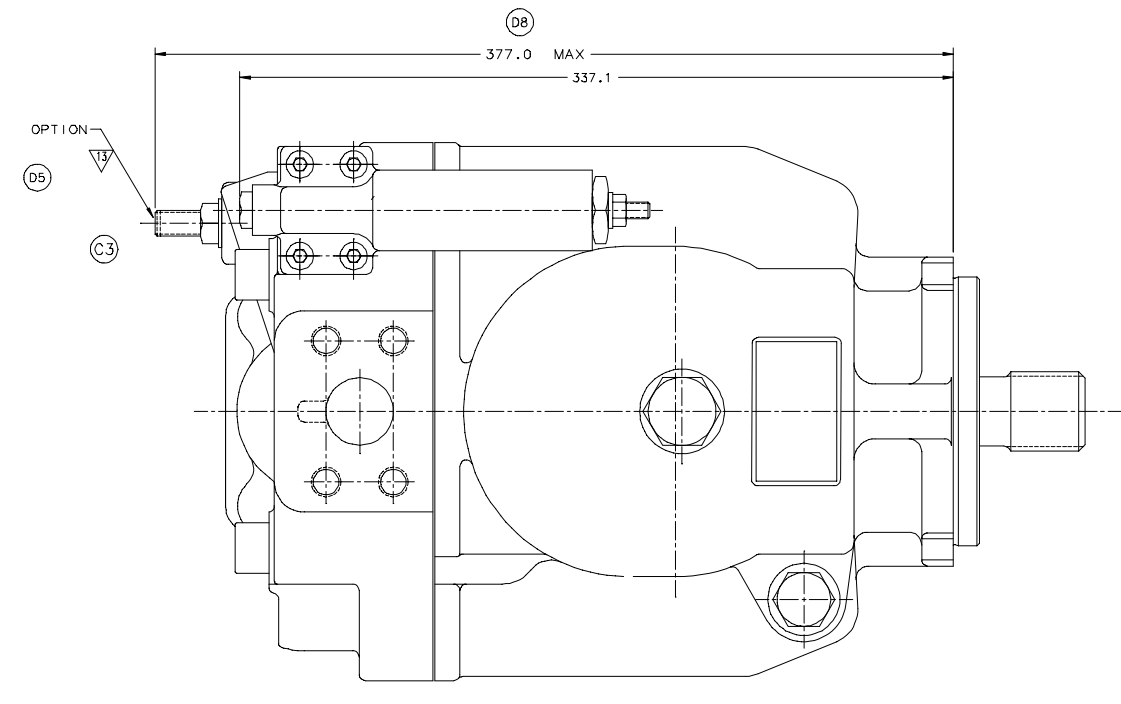
ZONE	REV	DESCRIPTION	DATE	APPROVED
A	1	1. C.P. NO. 000016	12/19/88	S.L.TODD
B	1	1. C.P. NO. 000014 (R.C.)	12/19/88	S.L.TODD
C	1	1. C.P. NO. 000014	12/19/88	S.L.TODD
D	1	1. C.P. NO. 000014	12/19/88	S.L.TODD
E	1	1. C.P. NO. 000014	12/19/88	S.L.TODD
F	1	1. C.P. NO. 000014	12/19/88	S.L.TODD
G	1	1. C.P. NO. 000014	12/19/88	S.L.TODD
H	1	1. C.P. NO. 000014	12/19/88	S.L.TODD



LEFT HAND ROTATION
PRESSURE COMPENSATOR



RIGHT HAND ROTATION
PRESSURE COMPENSATOR



RIGHT HAND ROTATION
PRESSURE COMPENSATOR

855703

D.T. CODE NO.	DIST. CODES AE, G, B1, BS, SA, A	DATE	REV	BY	CHKD	APPD
UNLESS OTHERWISE SPECIFIED DIMENSIONS ARE IN MILLIMETERS DIMENSIONS IN PARENTHESIS ARE DIMENSIONS IN INCHES	UNIT: METRIC	12/19/88	1			
1. PUMP 2. PUMP 3. PUMP	4. PUMP 5. PUMP 6. PUMP	7. PUMP 8. PUMP 9. PUMP	10. PUMP 11. PUMP 12. PUMP	13. PUMP 14. PUMP 15. PUMP	16. PUMP 17. PUMP 18. PUMP	19. PUMP 20. PUMP 21. PUMP
VICKERS Vickers, Incorporated, a TRINITY Company			TITLE: INSTALLATION VARIABLE DISPLACEMENT PISTON PUMP			
DRAWING NO. 855703			SHEET 3 OF 4			

METRIC

14 13 12 11 10 9 8 7 6 5 4 3 2 1

14 13 12 11 10 9 8 7 6 5 4 3 2 1

REV	DESCRIPTION	DATE	APPROVED
A	REVISED PER 855703	10/20/00	S.K.W.
B	REVISED PER 855703 (R.C.)	10/20/00	S.K.W.
C	REVISED PER 855703	10/20/00	L.K.
D	REVISED PER 855703	10/20/00	N. BOONE
E	REVISED PER 855703	10/20/00	J. KELLY

- 1 THESE FEATURES ARE DIMENSIONED IN INCHES THE LOCATION TOLERANCES ARE METRIC.
- 2 FILL CASE WITH OIL THROUGH EITHER OF THESE DRAIN PORTS. CASE MUST BE FILLED BEFORE PUMP IS STARTED. CASE DRAIN PORT MUST BE LOCATED AT THE UPPERMOST POSITION OF THE PUMP AND MUST BE CONNECTED DIRECTLY TO THE RESERVOIR. MAXIMUM CONTINUOUS PRESSURE AT THE CASE DRAIN PORT MUST NOT EXCEED 0.5 bar.
3. THE FLUID MUST CONFORM TO VICKERS HYDRAULIC FLUID RECOMMENDATION M-2950-S.
4. IN THOSE CASES WHERE GEOMETRIC TOLERANCE OF MOUNTING ARE CRITICAL OR WHERE SPECIFIC TOLERANCE RANGES ARE REQUIRED AND NOT SPECIFIED, CONSULT VICKERS ENGINEERING DEPT. FOR SPECIFIC LIMITS.

5 PERFORMANCE SPECIFICATION:

	FOR PVH131	FOR PVH141
RATED SPEED	2000 RPM	1900 RPM
MAX SPEED	2500 RPM	2400 RPM @ 1.5 bar ABS. INLET
RATED PRESSURE MAX	250 bar (3625 PSI)	225 bar (3263 PSI)
THEORETICAL DISPL.	131 ml/REV (8.0 CIR)	141 ml/REV (8.6 CIR)
INLET PRESSURE	1.0 bar ABS (14.5 PSIA)	1.0 bar ABS (14.5 PSIA)
RATED TEMPERATURE	93°C (200°F)	93°C (200°F)

6. CARE SHOULD BE TAKEN THAT MECHANICAL AND HYDRAULIC RESONANCES ARE AVOIDED IN THE APPLICATION OF THIS COMPONENT. SUCH RESONANCES CAN SERIOUSLY COMPROMISE THE LIFE AND/OR SAFE OPERATION OF THE COMPONENT.
7. THE MAXIMUM ECCENTRICITY BETWEEN SHAFT O.D. (OR SPLINE P.D.) & PILOT DIA. IS 0.15 (.006) T.R.I. WHICH INCLUDES AN ECCENTRICITY OF 0.076 (.003) BETWEEN THE SHAFT AND ITS BEARING PILOT. MAXIMUM SQUARENESS DEVIATION OF MOUNTING FLANGE FACE TO AXIS OF SHAFT IS (0.0015) mm/mm. MATING PART TOLERANCES & INSTALLATION PRACTICES MUST BE COMPATIBLE SO THAT INTERFERENCES DO NOT RESULT IN SHAFT SIDE LOAD DURING OPERATION. A COUPLING MAY BE USED TO PERMIT GREATER TOLERANCES IF IT DOES NOT RESULT IN SHAFT SIDE LOAD.
8. "90" DUROMETER NITRILE (BUNA-"N") ELASTOMER O-RING TO BE USED ON ALL S.A.E. AND I.S.O. STRAIGHT THREAD CONNECTIONS.
9. PRESSURE DECAY RATE OF SIGNAL LINE "J" SHALL NOT EXCEED 11.0 KBAR/SEC (160.0 KSI/SEC).

10 DIMENSION SHOWN FOR LOAD SENSING SIGNAL PORT "J".

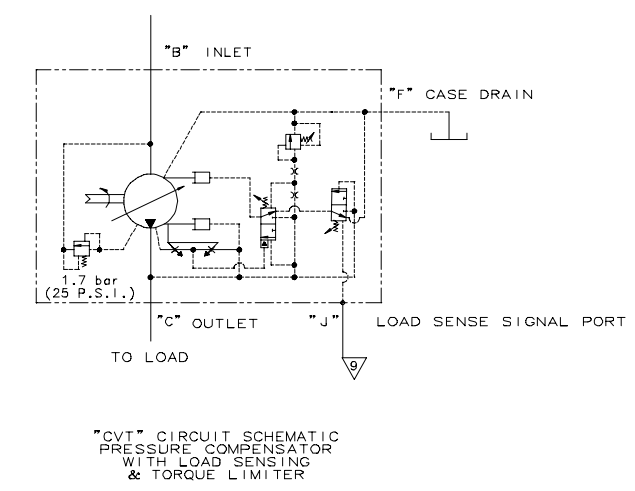
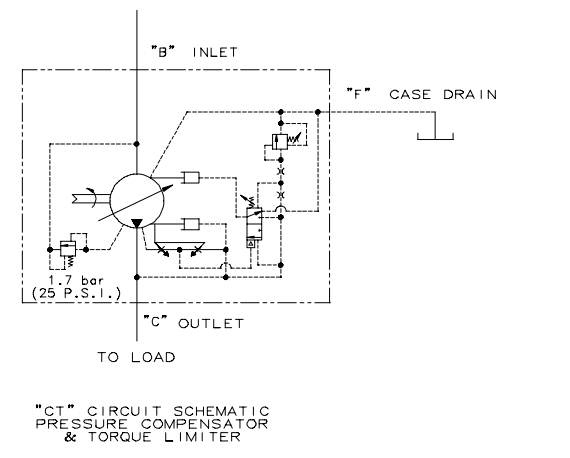
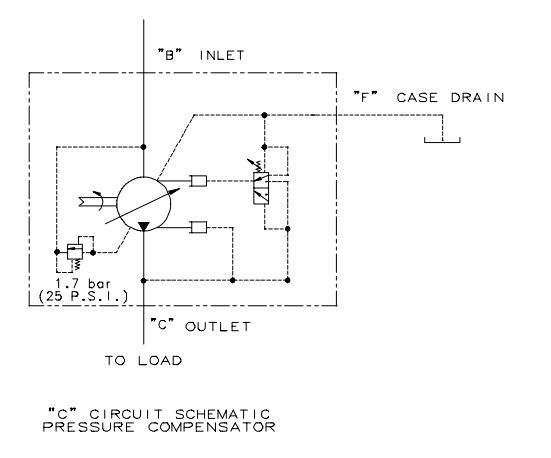
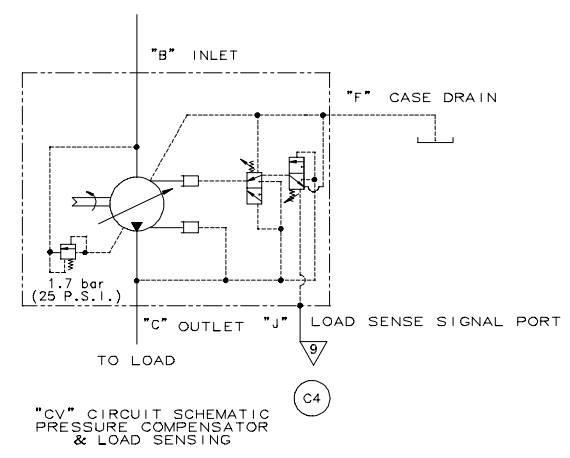
11 WEIGHT SPECIFICATION

	C	CV	CT	CVT
DRY:	60.23Kg (132.78 lb)	61.55Kg (135.70 lb)	64.24Kg (141.62 lb)	66.13Kg (145.79 lb)
WET:	62.81Kg (138.47 lb)	64.13Kg (141.39 lb)	66.82Kg (147.31 lb)	68.71Kg (151.48 lb)

12 CENTER OF GRAVITY

	C	CV	CT	CVT
"D"	180.8/177.8	182.3/179.3	185.0/182.0	186.8/183.8
"E"	13.2/10.2	17.3/14.3	22.5/19.5	27.4/24.4
"F"	4.4/1.4	6.4/3.4	10.2/7.2	12.7/9.7

13 MAXIMUM ADJUSTABLE STOP OPTION TORQUE SEALING LOCKNUT 25-50 Nm.



METRIC

REV	DESCRIPTION	DATE	APPROVED
A	REVISED PER 855703	10/20/00	S.K.W.
B	REVISED PER 855703 (R.C.)	10/20/00	S.K.W.
C	REVISED PER 855703	10/20/00	L.K.
D	REVISED PER 855703	10/20/00	N. BOONE
E	REVISED PER 855703	10/20/00	J. KELLY

855703

INSTALLATION VARIABLE DISPLACEMENT PISTON PUMP

SCALE 1/1 IN

SHEET 4 OF 4

14 13 12 11 10 9 8 7 6 5 4 3 2 1