



# Piston-Vibrators FP

**Pneumatic piston vibrators for linear vibration with unlimited fine-tuning facilities for amplitude and frequency. Wide range.**

## Properties

- Quiet and efficient
- Rated frequency 1'800 – 9'300 vpm
- Force 32 – 6'150 N
- Continuously variable
- Can be used up to 120 °C, HT version up to 150 °C and LT version on request
- Resistant to extreme environmental conditions
- Also available with ATEX certification

## Field of application

- Driving conveyor and discharge chutes
- Loosening or compacting of bulk materials
- Starting up of mechanical processes
- Filling facilities

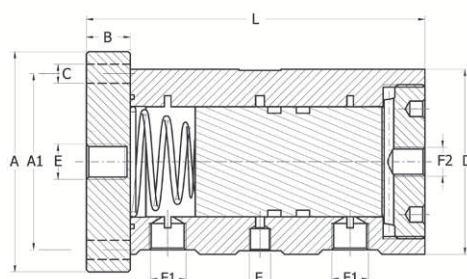
## Construction

Aluminium housing surface-hardened and corrosion-resistant

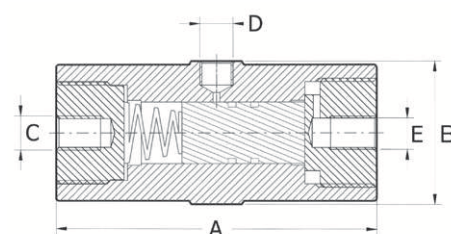
Technical data (with PSI, LBS, CF: [www.findeva.com](http://www.findeva.com))

Model	Vibrations 1000 vpm		Force N		air consumption l/min		A Length mm	B SW mm	C Thread	D Inlet	E Outlet	Weight g
	2 bar	6 bar	2 bar	6 bar	2 bar	6 bar						
FP-12-S	6,2	9,3	34	92	0,8	25	71	34	M-8	1/8"	1/8"	153
FP-12-M	5	6,7	34	74	0,5	19	81	34	M-8	1/8"	1/8"	178
FP-12-L	4	5,4	32	81	1	20	94	34	M-8	1/8"	1/8"	212
FP-18-S	5	7,7	66	187	5	57	81	42	M-10	1/8"	1/8"	300
FP-18-M	4	5,9	68	188	4	52	94	42	M-10	1/8"	1/8"	352
FP-18-L	3,1	4,6	64	206	5	46	109	42	M-10	1/8"	1/8"	423
FP-25-S	3,6	5,5	126	416	13	93	98	50	M-12	1/8"	1/4"	553
FP-25-M	3	4,2	142	504	23	87	116	50	M-12	1/8"	1/4"	672
FP-25-L	2,4	3,7	186	594	18	93	136	50	M-12	1/8"	1/4"	820
FP-35-S	3,8	5,8	294	1038	23	162	98	65	M-12	1/4"	1/4"	926
FP-35-M	3	4,6	248	1080	24	141	116	65	M-12	1/4"	1/4"	1135
FP-35-L	2,4	3,6	282	1066	38	135	136	65	M-12	1/4"	1/4"	1382
FP-50-M	1,85	2,8	490	1660	48	192	L 154	A 90	C 8,8	F 1/4"	F <sub>1</sub> 1/4"	3300
FP-60-M	1,95	2,7	610	2170	90	275	L 154	A 110	C 8,8	F 1/4"	F <sub>1</sub> 3/8"	4250
FP-95-M	1,8	2,8	1620	6150	170	490	L 156	A 150	C 13,0	F 3/8"	F <sub>1</sub> 3/8"	9460

FP-50 – 95



FP-12 – 35



Housing made from hard-anodized aluminium alloy  
 Piston made from leaded-bronze  
 Steel spring starting device  
 Hard anodized aluminium end cap