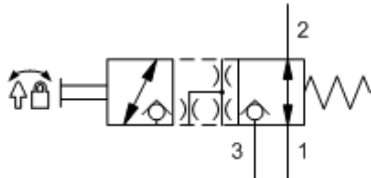
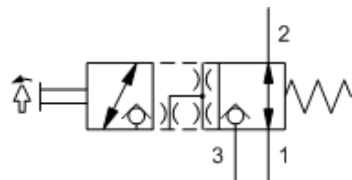


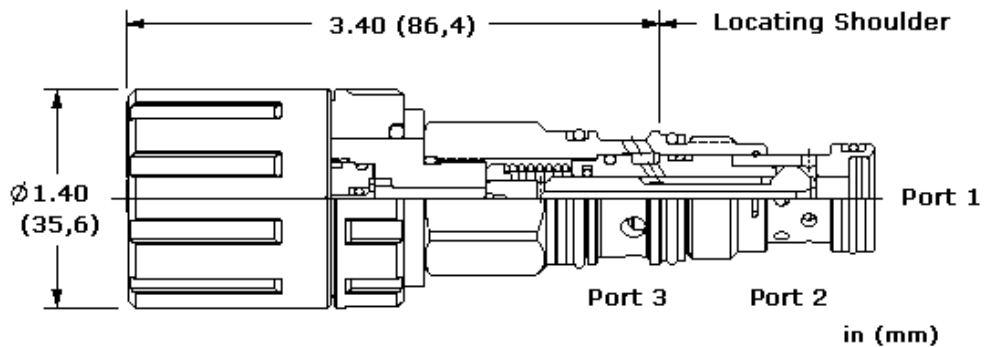
L-Control, A-Poppet



D-Control, A-Poppet



T-Control, A-Poppet



This manually operated, 2-position, 3-way directional cartridge is a direct-acting, poppet-style valve used to control the direction of flow in a hydraulic circuit. The valve is normally open between port 1 and port 2 with port 3 blocked. Operating the valve connects port 2 to 3 and blocks port 1. All flow paths are bidirectional and blocked paths are blocked in both directions. Due to the poppet style construction, this valve has extremely low leakage.

Manual operation is achieved via Sun's Twist/Lock manual override mechanism and is designed for intermittent (infrequent) use only.

TECHNICAL DATA

NOTE: DATA MAY VARY BY CONFIGURATION. SEE CONFIGURATION SECTION.

Cavity	T-11A
Series	1
Capacity	30 L/min.
Maximum Operating Pressure	350 bar
Maximum Valve Leakage at 110 SUS (24 cSt)	0,7 cc/min.@350 bar
Operating Torque	1,2 Nm
Valve Hex Size	22,2 mm
Valve Installation Torque	41 - 47 Nm
Seal kit - Cartridge	Buna: 990411007
Seal kit - Cartridge	Viton: 990411006
Model Weight	0.35 kg.

CONFIGURATION OPTIONS

Model Code Example: **DWDMLAN**

CONTROL	(L) POPPET CONFIGURATION	(A) SEAL MATERIAL	(N)
L Twist/Lock (Detent) Manual Override	A Normally Open 1 to 2, Closed 2 to 3	N Buna-N	
D Twist/Lock (Dual) Manual Override		E EPDM	
T Twist (Momentary) Manual Override		V Viton	

TECHNICAL FEATURES

- This valve is designed for intermittent use such as a manual override. The manual control assembly has a mechanical life expectancy of approximately 7,000 cycles.
- The momentary/twist control option "T" allows the operator to momentarily shift the valve by twisting the knob clockwise and releasing. Once released, the valve returns to its normal position.
- The detent/lock control option "L" allows the operator to shift the valve into a mechanically detented position by twisting the knob counter-clockwise. This detented position will be maintained until the operator twists the knob clockwise and allows the valve to return to its normal position. Please note that the detented position is not intended for load holding applications but for temporary shifting only.
- The dual-operation control option "D" allows the operator to either shift the valve momentarily by twisting the knob clockwise or shift it into a mechanically detented position by twisting counter-clockwise. Please note that the detented position is not intended for load holding applications but for temporary shifting only.
- The control on this valve is meant to be operated by a person's hand. The control should not be modified, for instance fastening a lever to the knob. Under no circumstances should the control be operated by other mechanical devices.
- Valves exhibit extremely low leakage rates; less than 10 drops/min. @ 5000 psi (0,7 cc/min @350 bar).
- This valve is suitable for load holding on port 3 only. The detent mechanism in the manual override is meant for temporary actuation.
- Incorporates the Sun floating style construction to minimize the possibility of internal parts binding due to excessive installation torque and/or cavity/cartridge machining variations.

PERFORMANCE CURVES

