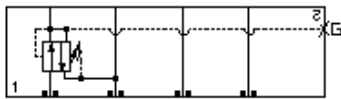
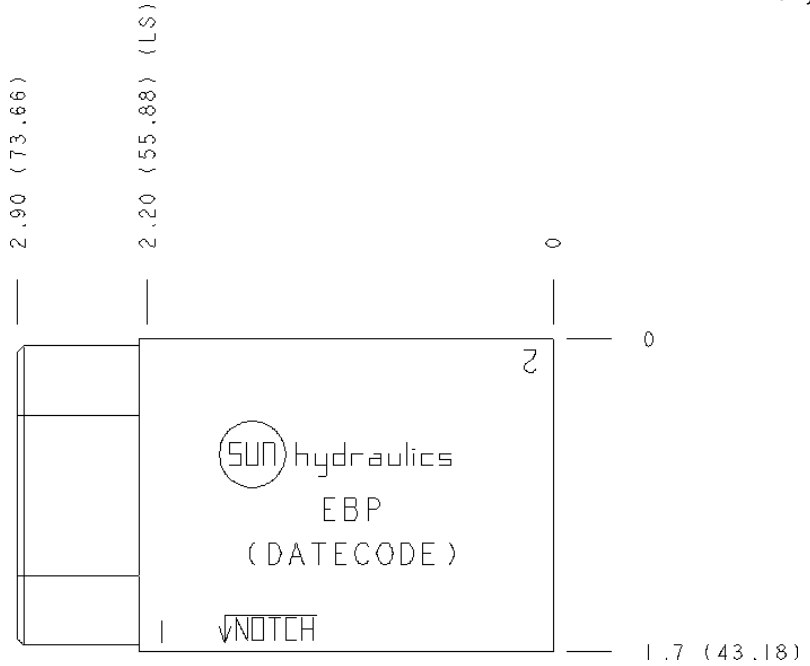
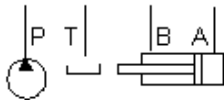


Reducing, On P, drain to T



Reducing/Relieving, On P tank to T



**TECHNICAL DATA**

Body Type	Sandwich
Interface	ISO 03
Body Features	On P, port 3 to T
Stack Height	44,5 mm
Open Cavities	1
Cavity	T-11A
Port Size	1/4" NPTF
Model Weight	0.31 kg.

**NOTES**

- Stack height value in technical data table includes seal retainer plate.
- **Important:** Carefully consider the maximum system pressure. The pressure rating of the manifold is dependent on the manifold material, with the port type/size a secondary consideration. Manifolds constructed of aluminum are not rated for pressures higher than 3000 psi (210 bar), regardless of the port type/size specified.

**PORT DESIGNATORS**

Modifiers	Ports
EBP, /S, /V, /Y	Gage Port (Plugged): 1/4" NPTF;
EBP/M, /T, /W, /Z	Gage Port (Plugged): 1/4" BSPP;

**INCLUDED COMPONENTS**

Part	Description	Quantity
340-003	Pipe Plug	1
500-001-012	O-Ring	4
700-002	Seal Plate	1
811-001-006	Pin	1
850-004-218	Plug	1

**CONFIGURATION OPTIONS**

Model Code Example: **EBP**

**MODIFIER**

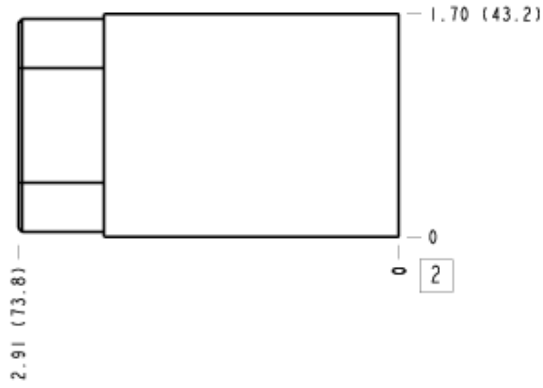
- 6061-T651 Aluminum, Buna-N**
- /M** 6061-T651 Aluminum, Metric, Buna-N
  - /S** 65-45-12 Ductile Iron, Buna-N, Blackened
  - /T** 65-45-12 Ductile Iron, Metric, Buna-N, Blackened
  - /V** 6061-T651 Aluminum, Viton
  - /W** 65-45-12 Ductile Iron, Metric, Viton, Blackened
  - /Y** 65-45-12 Ductile Iron, Viton, Blackened
  - /Z** 6061-T651 Aluminum, Metric, Viton

**MANIFOLD FACES**

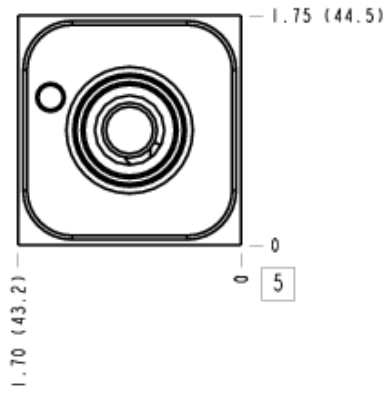
**FACE GRID**



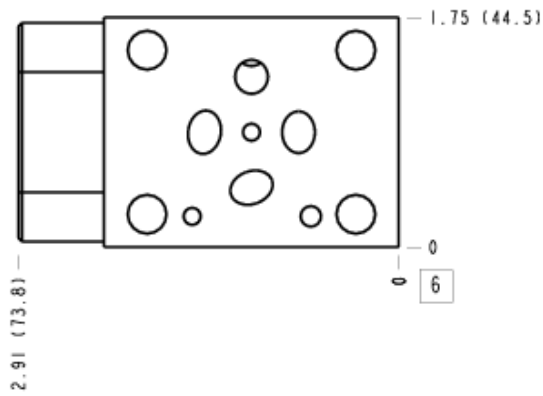
### Face 2



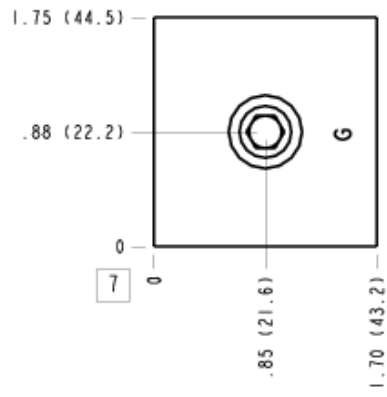
### Face 5



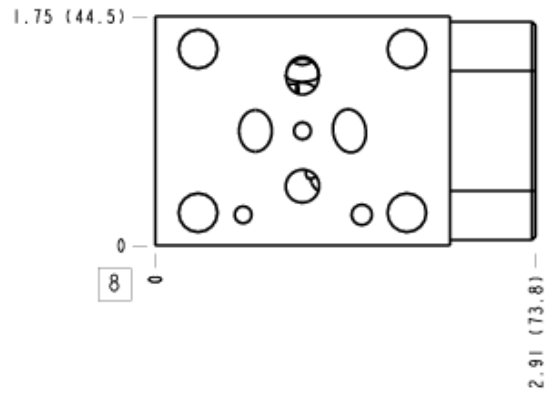
### Face 6



### Face 7



### Face 8



Face 10

