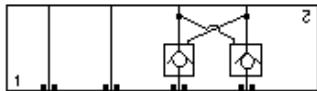
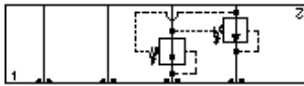


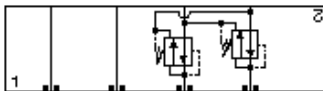
Counterbalance, On A and B, Cross-Piloted



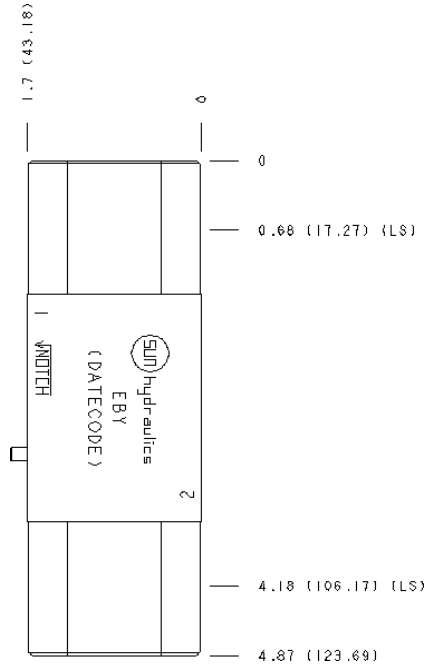
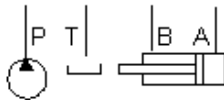
Pilot Operated Check, On A and B, Cross-Piloted



Reducing, On A and B drained to opposite port



Reducing/Relieving, On A and B drain to opposite port



TECHNICAL DATA

Body Type	Sandwich
Interface	ISO 03
Body Features	On A and B with cross pilot
Stack Height	44,5 mm
Open Cavities	2
Cavity	T-11A
Model Weight	0.48 kg.

NOTES

- Stack height value in technical data table includes seal retainer plate.
- Important:** Carefully consider the maximum system pressure. The pressure rating of the manifold is dependent on the manifold material, with the port type/size a secondary consideration. Manifolds constructed of aluminum are not rated for pressures higher than 3000 psi (210 bar), regardless of the port type/size specified.

INCLUDED COMPONENTS

Part	Description	Quantity
500-001-012	O-Ring	4
700-002	Seal Plate	1
811-001-006	Pin	1
850-004-250	Plug	2

CONFIGURATION OPTIONS

Model Code Example: EBY

MODIFIER

6061-T651 Aluminum, Buna-N

/S 65-45-12 Ductile Iron, Buna-N, Blackened

/V 6061-T651 Aluminum, Viton

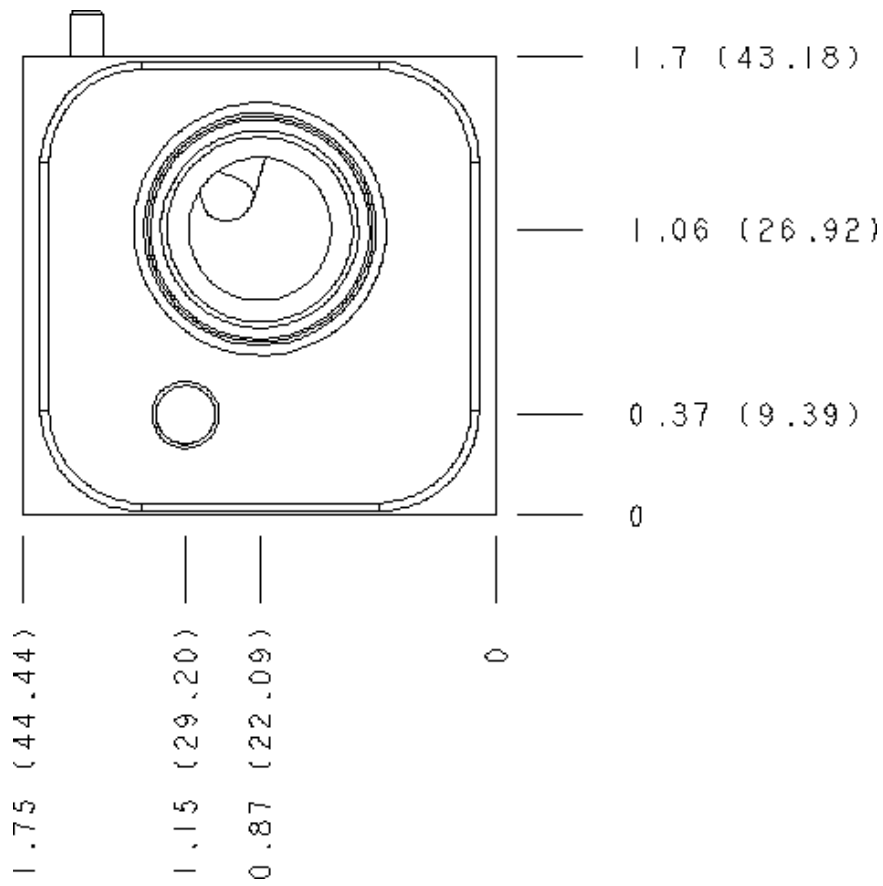
/Y 65-45-12 Ductile Iron, Viton, Blackened

MANIFOLD FACES

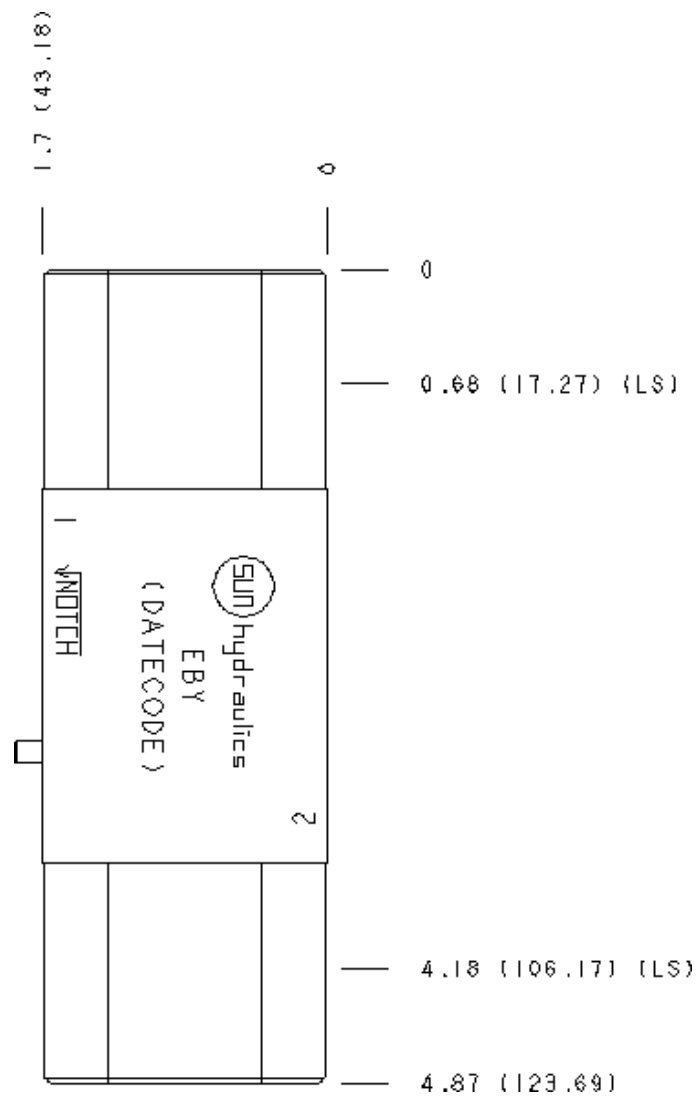
FACE GRID

1	2	3	4
5	6	7	8

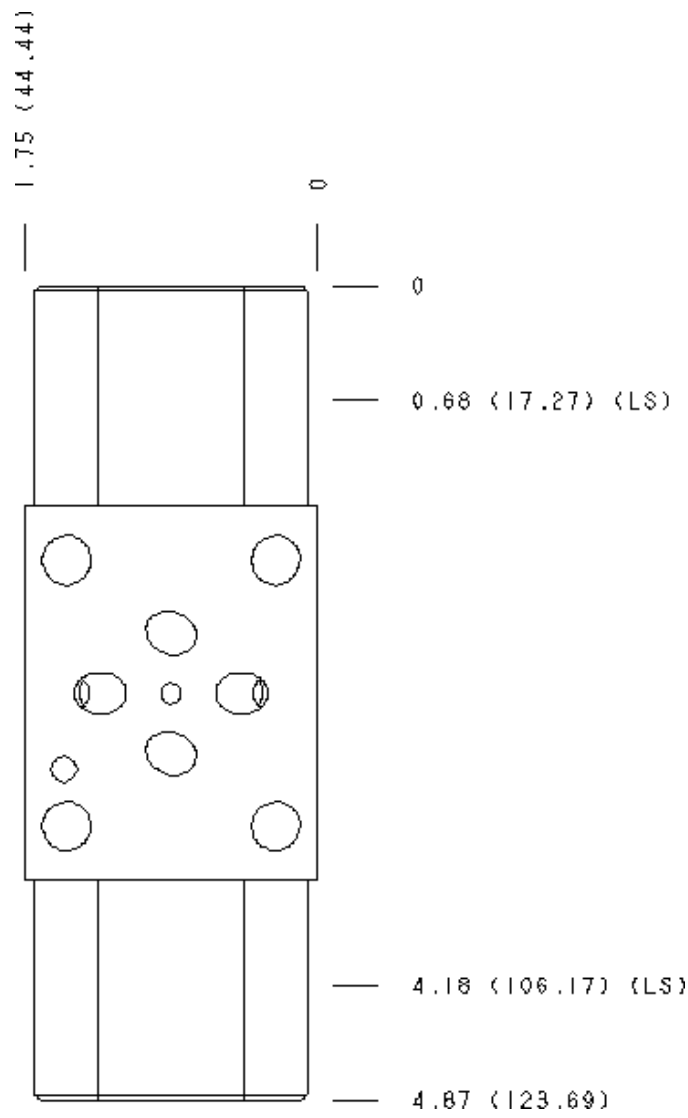
Face 2



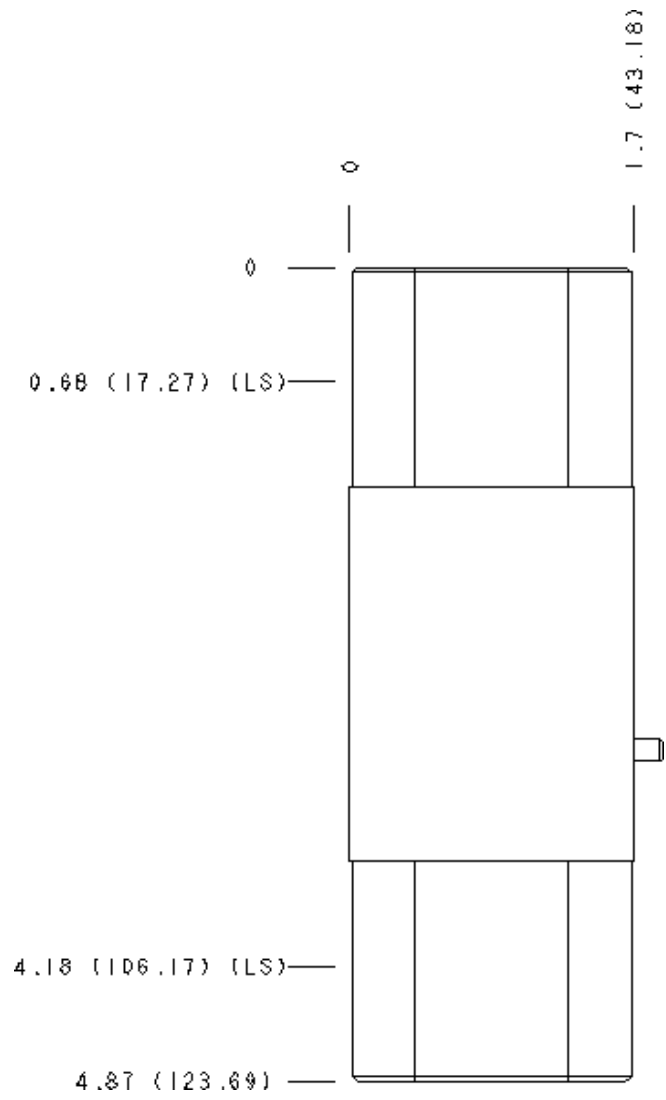
Face 5



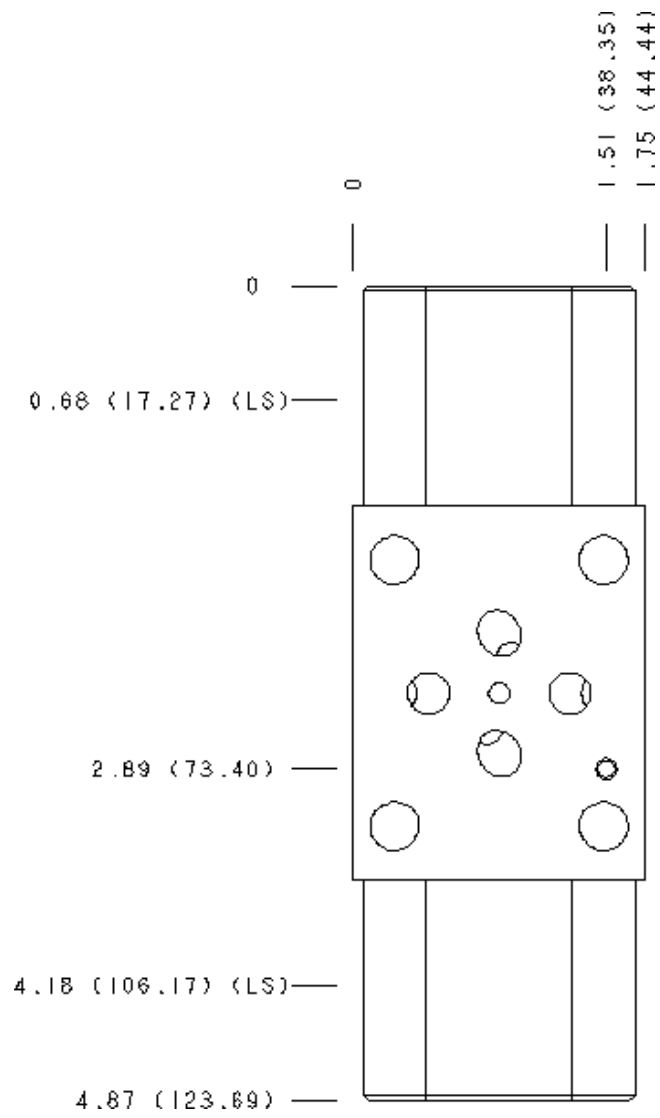
Face 6



Face 7



Face 8



Face 10

