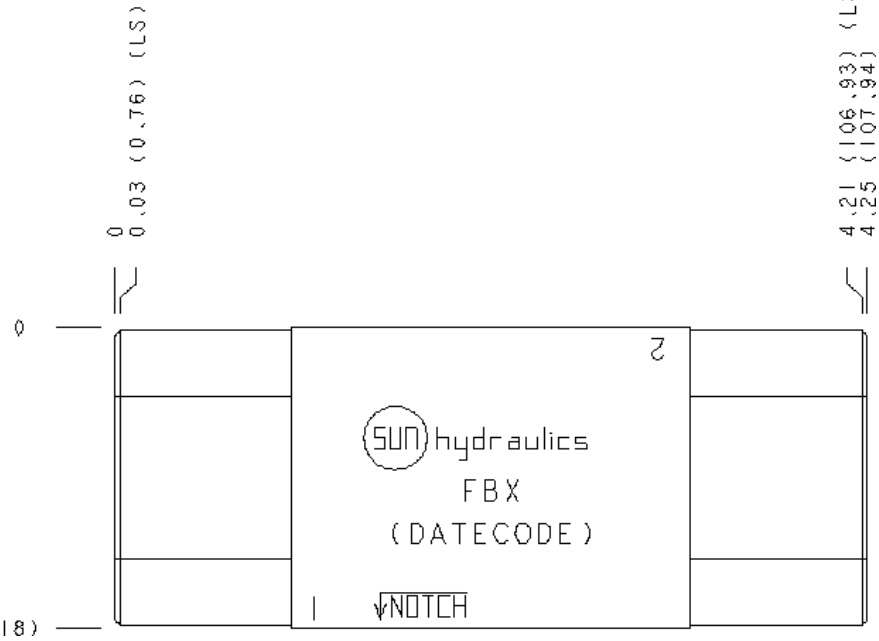
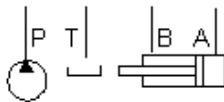


Relief, A and B to T High Capacity



## TECHNICAL DATA

Body Type	Sandwich
Interface	ISO 03
Body Features	A and B to T
Stack Height	44,5 mm
Open Cavities	2
Cavity	T-10A
Model Weight	0.44 kg.

## NOTES

**Important:** Carefully consider the maximum system pressure. The pressure rating of the manifold is dependent on the manifold material, with the port type/size a secondary consideration. Manifolds constructed of aluminum are not rated for pressures higher than 3000 psi (210 bar), regardless of the port type/size specified.

## INCLUDED COMPONENTS

Part	Description	Quantity
500-001-012	O-Ring	4
700-002	Seal Plate	1
811-001-006	Pin	1

## CONFIGURATION OPTIONS

Model Code Example: FBX

### MODIFIER

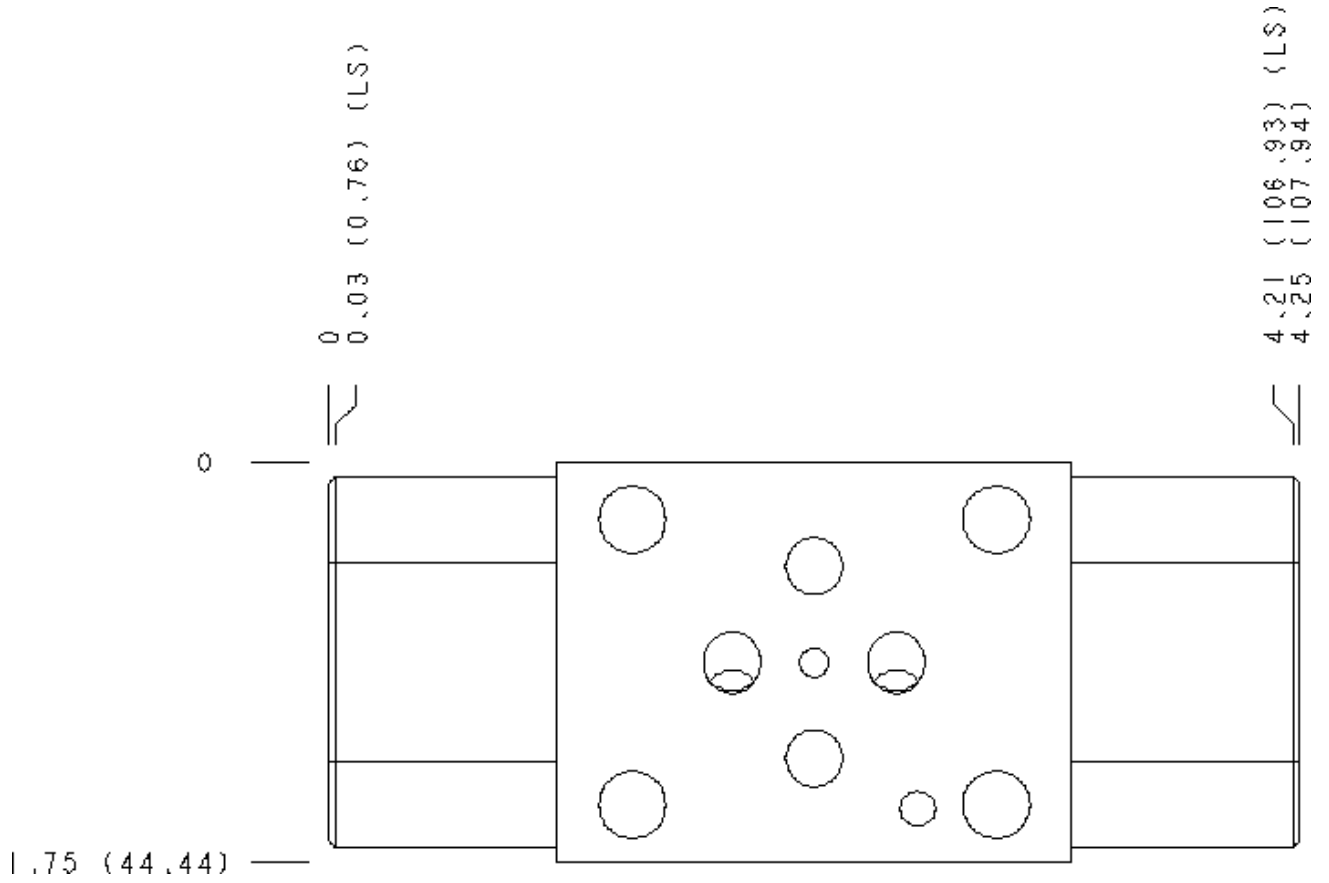
6061-T651 Aluminum, Buna-N  
 /S 65-45-12 Ductile Iron, Buna-N, Blackened  
 /V 6061-T651 Aluminum, Viton  
 /Y 65-45-12 Ductile Iron, Viton, Blackened

## MANIFOLD FACES

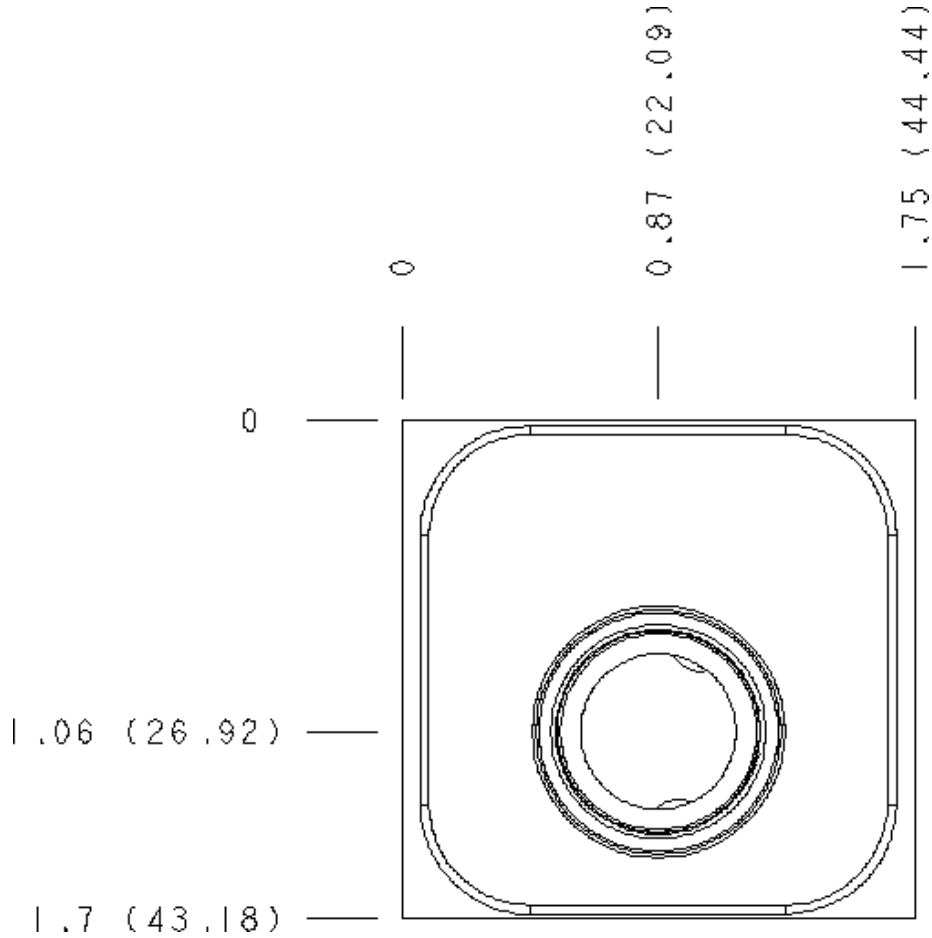
### FACE GRID

1	2	3	4
5	6	7	8
9	10	11	12

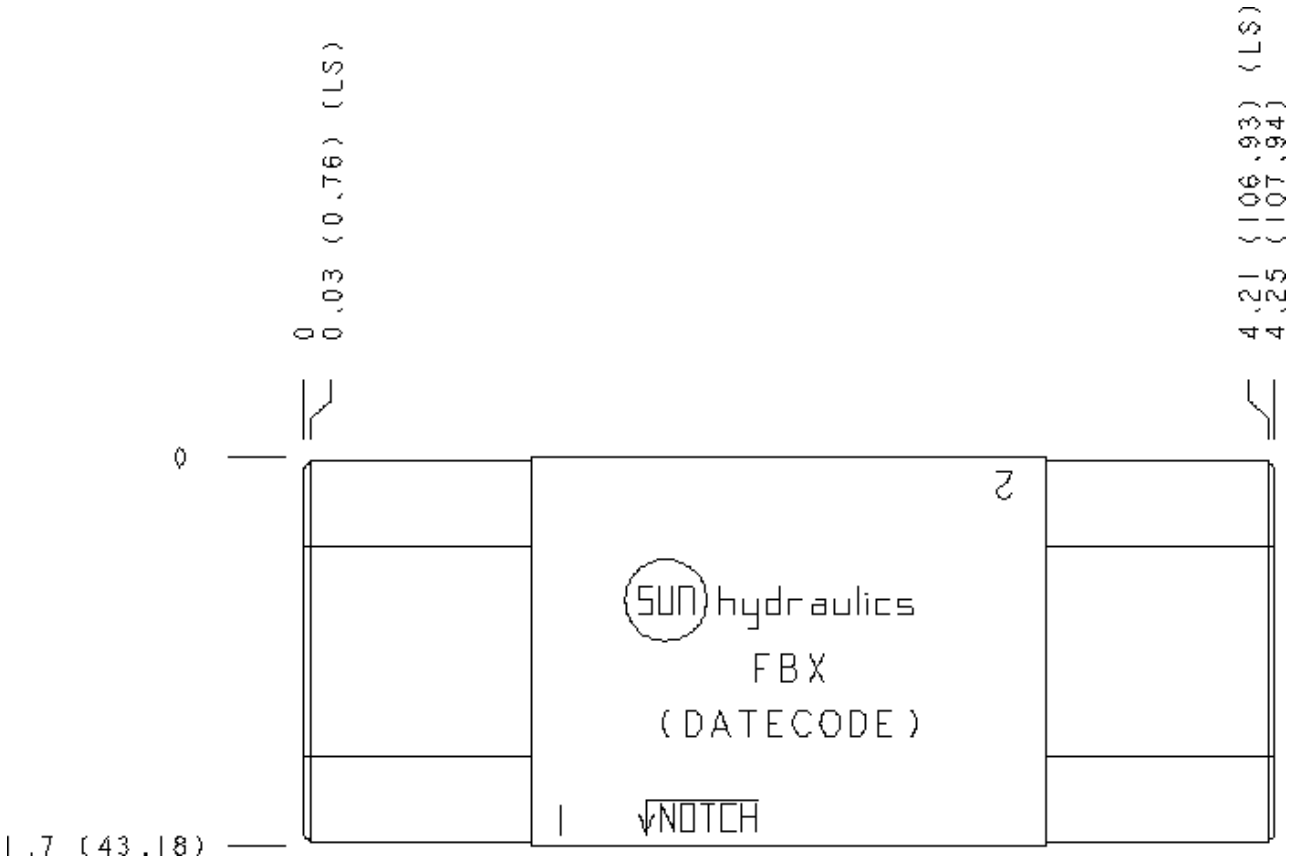
Face 2



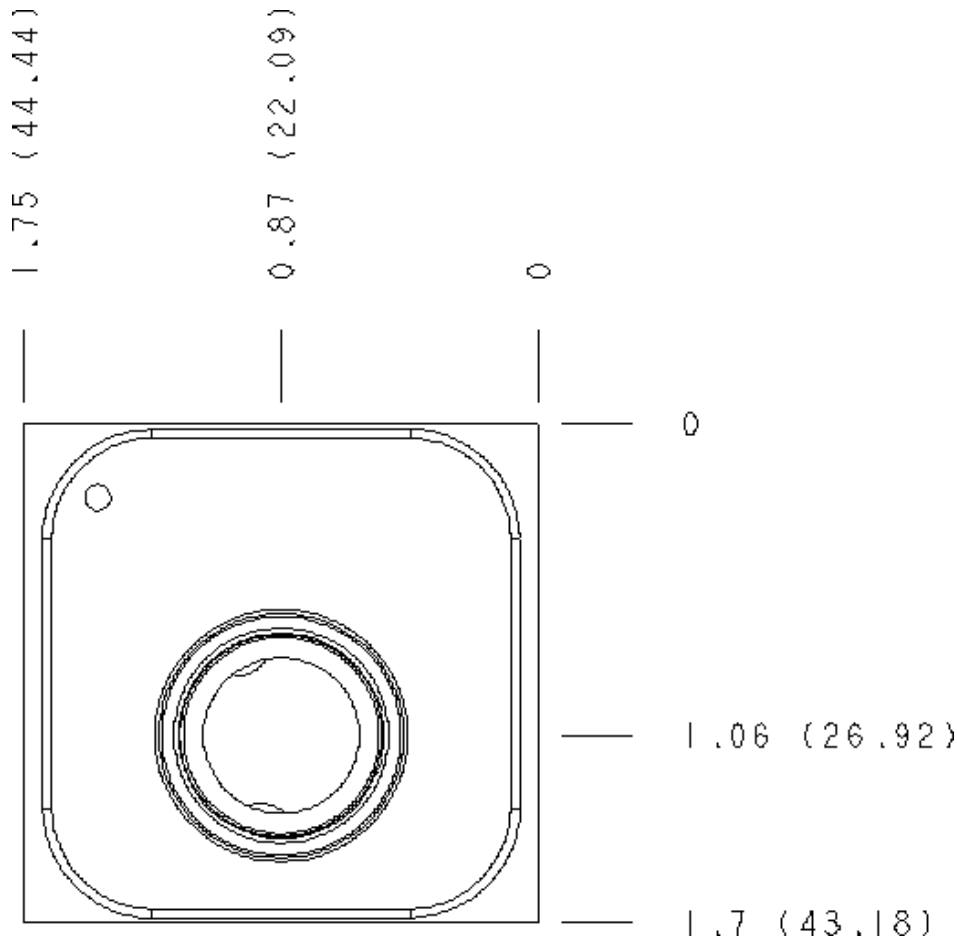
Face 5



# Face 6



# Face 7



# Face 10

1.75 (44.44)

0

0.03 (0.76) (LS)

4.21 (106.93) (LS)  
4.25 (107.94)