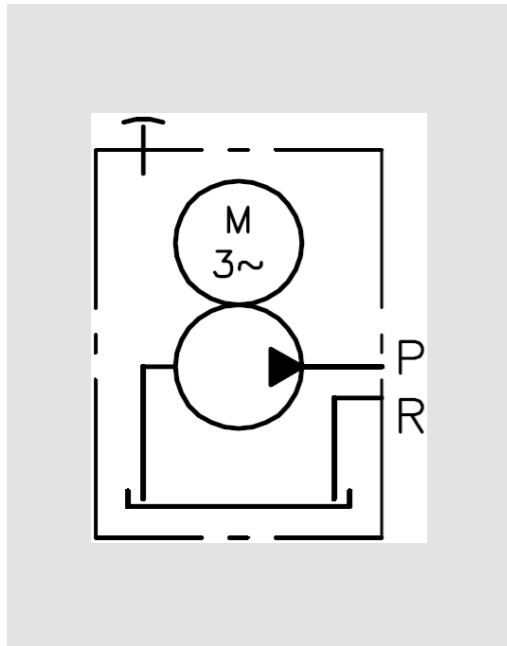


Compact hydraulic power unit type KA



Technical specifications	
Type of device	Hydraulic power unit
Sizes	2, 4
Design	Oil immersed motor for operating modes S2, S3
Pump type	Radial piston and / or gear pump
pmax	Radial piston pump 700 bar Gear pump 200 bar
Qmax	Radial piston pump 29.4 lpm Gear pump 22.5 lpm
Geometric displacement	Gear 0.23 - 7.24 cm ³ /rev Radial 0.86 - 7.89 cm ³ /rev
Max. motor power	4.0 kW
Motor type	Single- or three phase
Filling volume	3.9 l - 31 l
Useable volume	1.5l - 25l
Mounting position	Horizontal and vertical

Features and benefits:

- Space-saving integrated design
- Filling and useable oil volumes can be flexibly extended by modular tank design
- Optimal efficiency through oil immersed motor cooling
- Additional forced cooling fan available for optimal performance utilization

