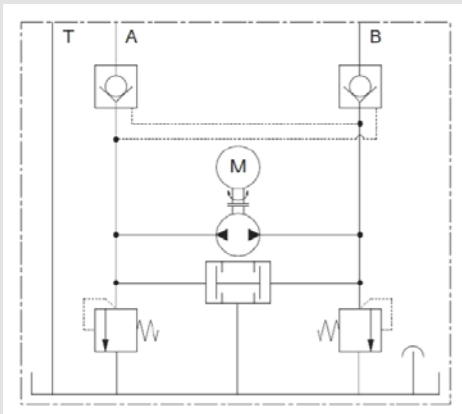


# Mini hydraulic power unit type HR size 050



## Technical specifications

Type of device	Hydraulic power unit
Sizes	050
Pump type	Radial piston pump
Protection class	IP65
pmax	200 bar
Qmax	1 lpm
Max. motor power	0.54 kW
Motor type	12 V DC
Filling volume	0.1 - 0.3l
Useable volume	0.082 - 0.23l
Mounting position	Horizontal and vertical



## Features and benefits:

- High power density
- Very compact unit
- Reversing pump

