

TECHNICAL DATA

Body Type	Line mount
Interface	None
Body Features	Through port with gauge port
Mounting Hole Thread	M10x1.5 - 6H
Mounting Hole Depth	15,7 mm
Mounting Hole Quantity	2
Open Cavities	1
Cavity	T-16A
Port Size	1 1/4" BSPP
Model Weight	1.28 kg.

NOTES *Important:* Carefully consider the maximum system pressure. The pressure rating of the manifold is dependent on the manifold material, with the port type/size a secondary consideration. Manifolds constructed of aluminum are not rated for pressures higher than 3000 psi (210 bar), regardless of the port type/size specified.

PORT DESIGNATORS

Modifiers	Ports
IEY	Ports 1 & 2: 1 1/4" BSPP; Gage Port: 1/4" BSPP;

CONFIGURATION OPTIONS

Model Code Example: IEY

MODIFIER

6061-T651 Aluminum, Buna-N

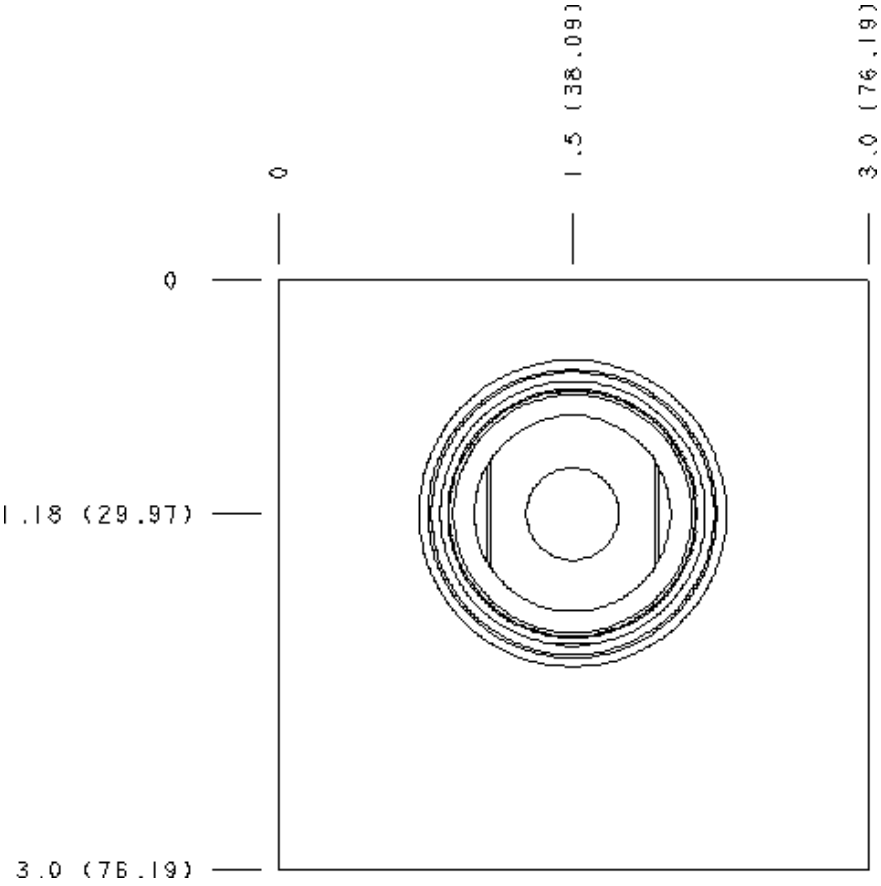
/S 65-45-12 Ductile Iron, Buna-N, Blackened

MANIFOLD FACES

FACE GRID

1	2	3	4
5	6	7	8
9	10	11	12

Face 2



Face 5

4.56 (115.82)
4.51 (114.55) (LS)

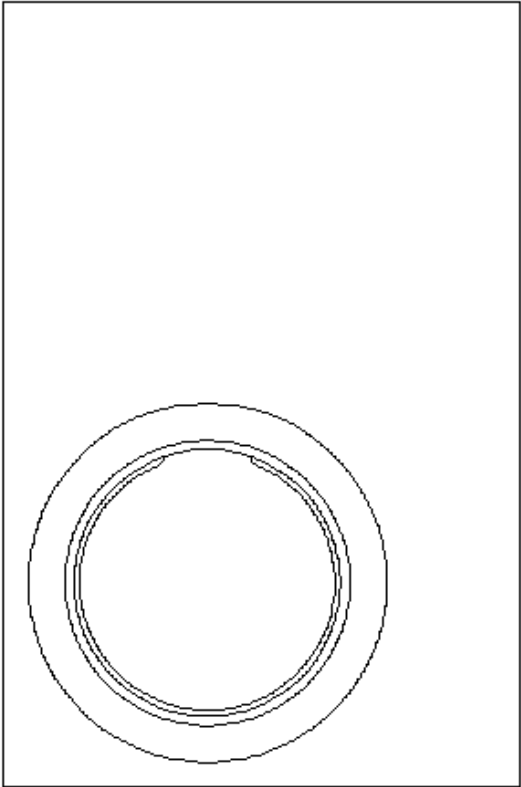
1.18 (29.97)

0

0

1.18 (29.97)

3.0 (76.18)



Face 6

4.56 (115.82)
4.51 (114.55) (LS)

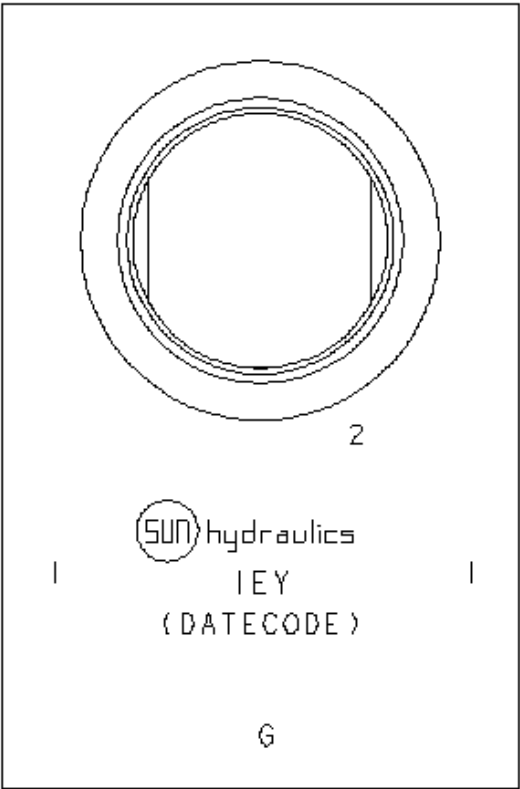
3.18 (80.77)

0

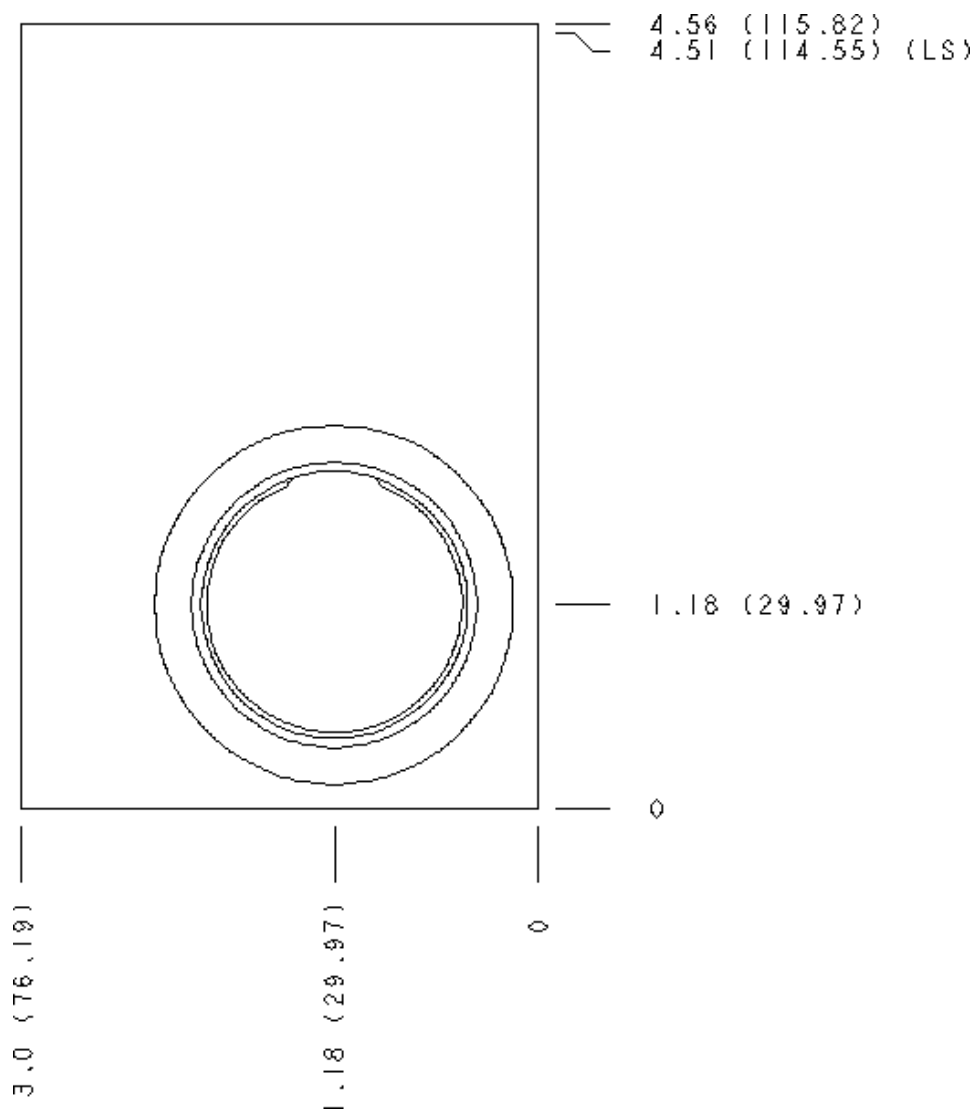
0

1.5 (38.09)

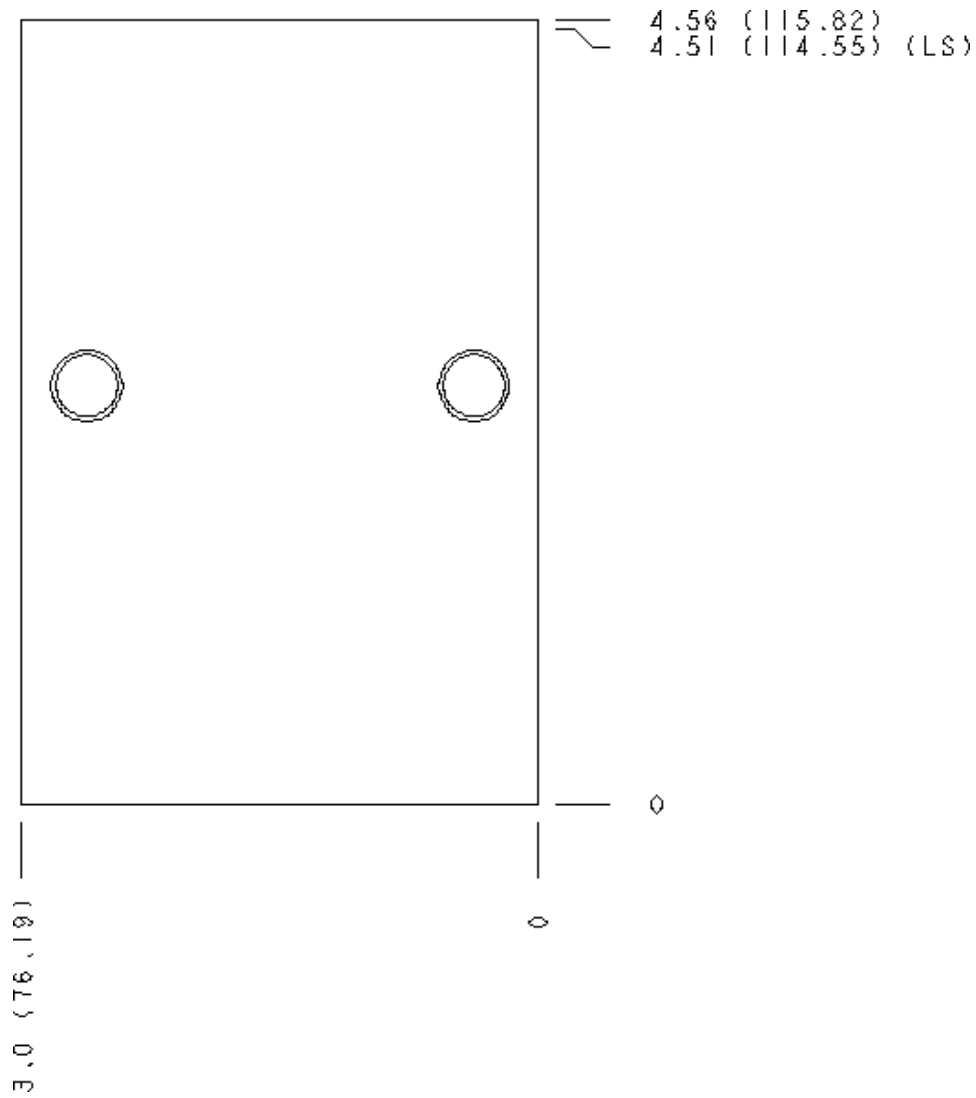
3.0 (76.18)



Face 7



Face 8



Face 10

