

TECHNICAL DATA

Body Type	Line mount
Interface	None
Body Features	Ninety degree with gauge port
Mounting Hole Diameter	10,4 mm
Mounting Hole Depth	Through
Mounting Hole Quantity	1
Open Cavities	1
Cavity	T-18A
	1 1/4" BSPP
Model Weight	1.37 kg.

NOTES *Important:* Carefully consider the maximum system pressure. The pressure rating of the manifold is dependent on the manifold material, with the port type/size a secondary consideration. Manifolds constructed of aluminum are not rated for pressures higher than 3000 psi (210 bar), regardless of the port type/size specified.

PORT DESIGNATORS

Modifiers	Ports
LAY	Ports 1 & 2: 1 1/4" BSPP; Gage Port: 1/4" BSPP;

CONFIGURATION OPTIONS

Model Code Example: LAY

MODIFIER

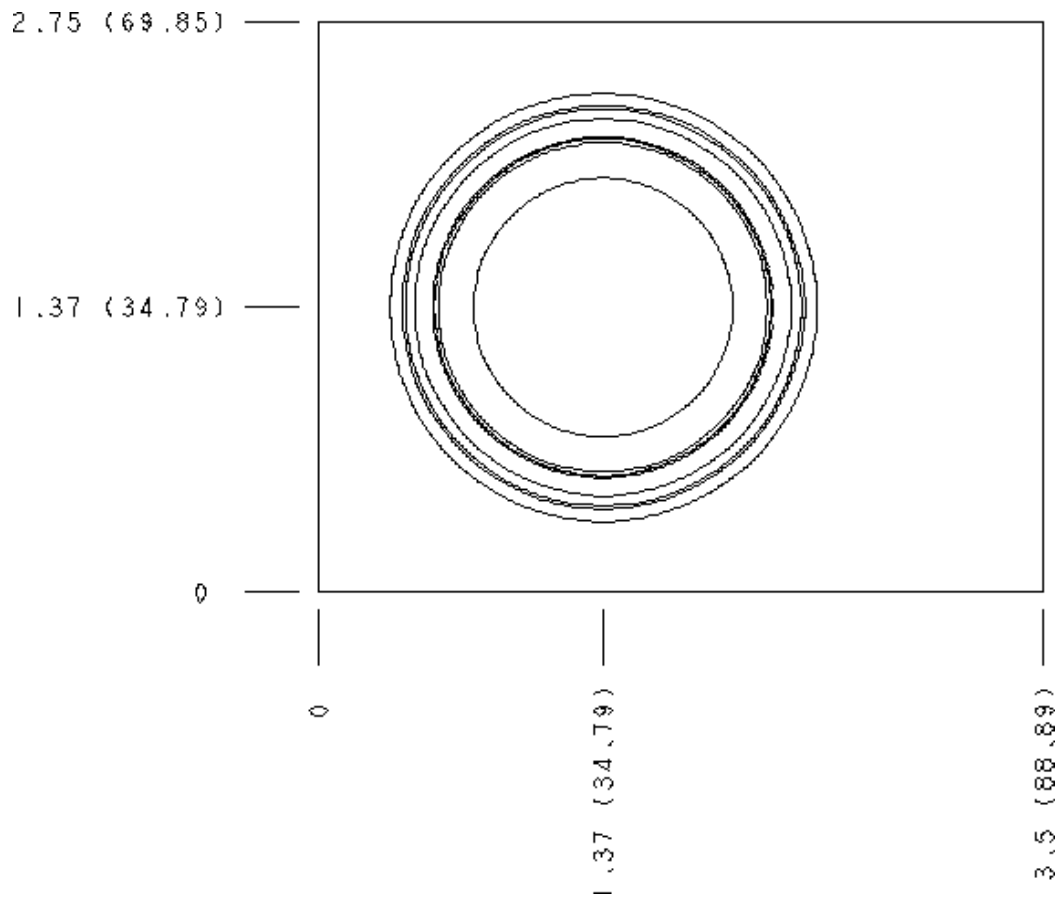
6061-T651 Aluminum, Buna-N
/S 65-45-12 Ductile Iron, Buna-N, Blackened

MANIFOLD FACES

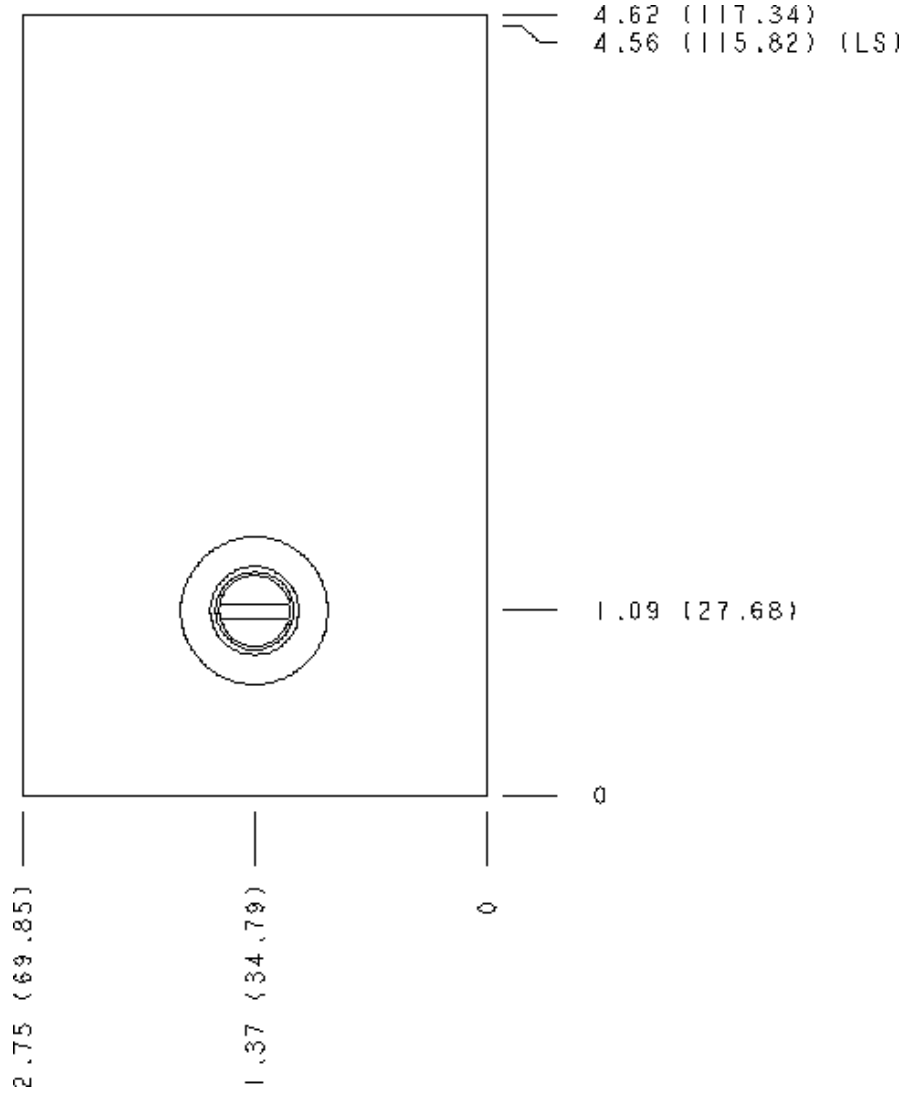
FACE GRID

1	2	3	4
5	6	7	8
9	10	11	12

Face 2

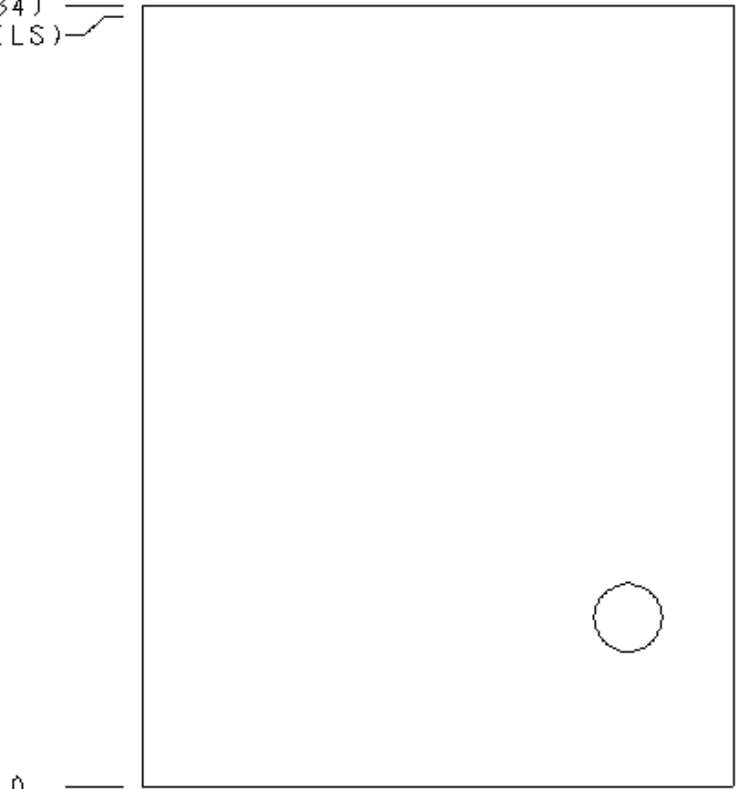


Face 5



Face 6

4.62 (117.34)
4.56 (115.82) (LS)

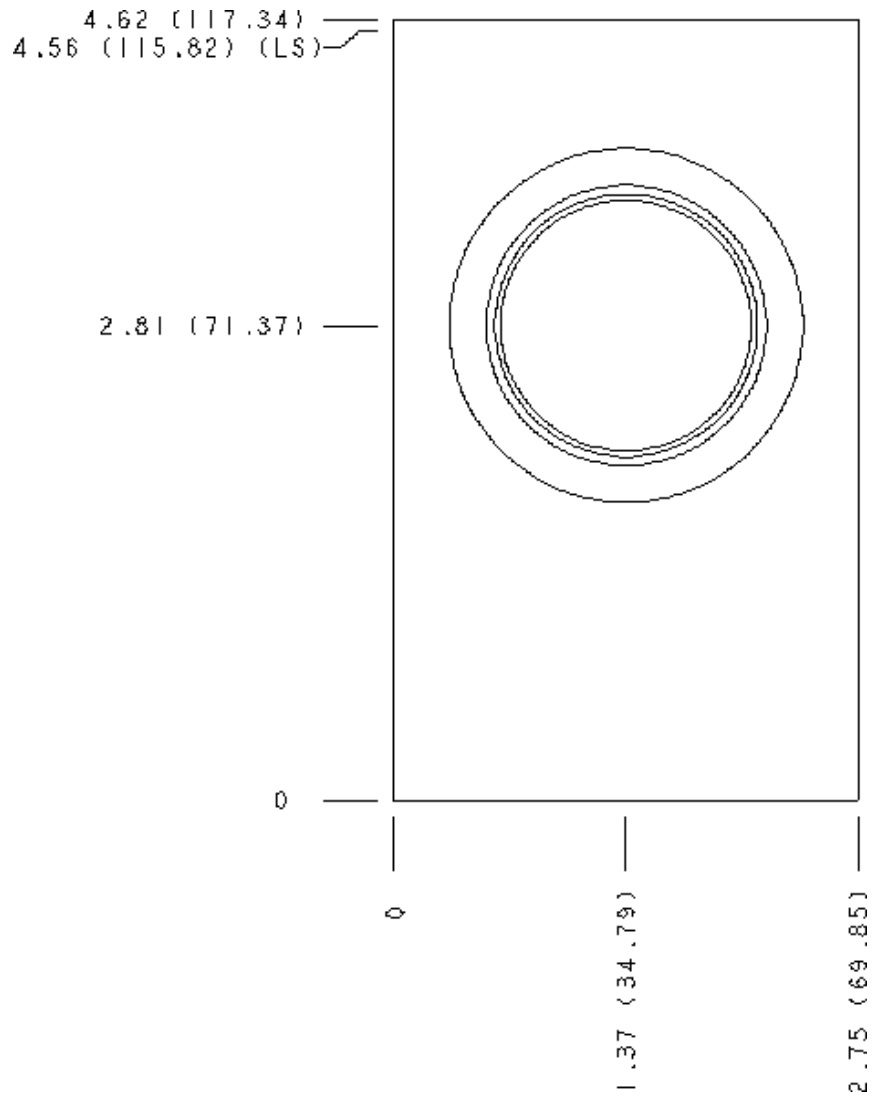


0

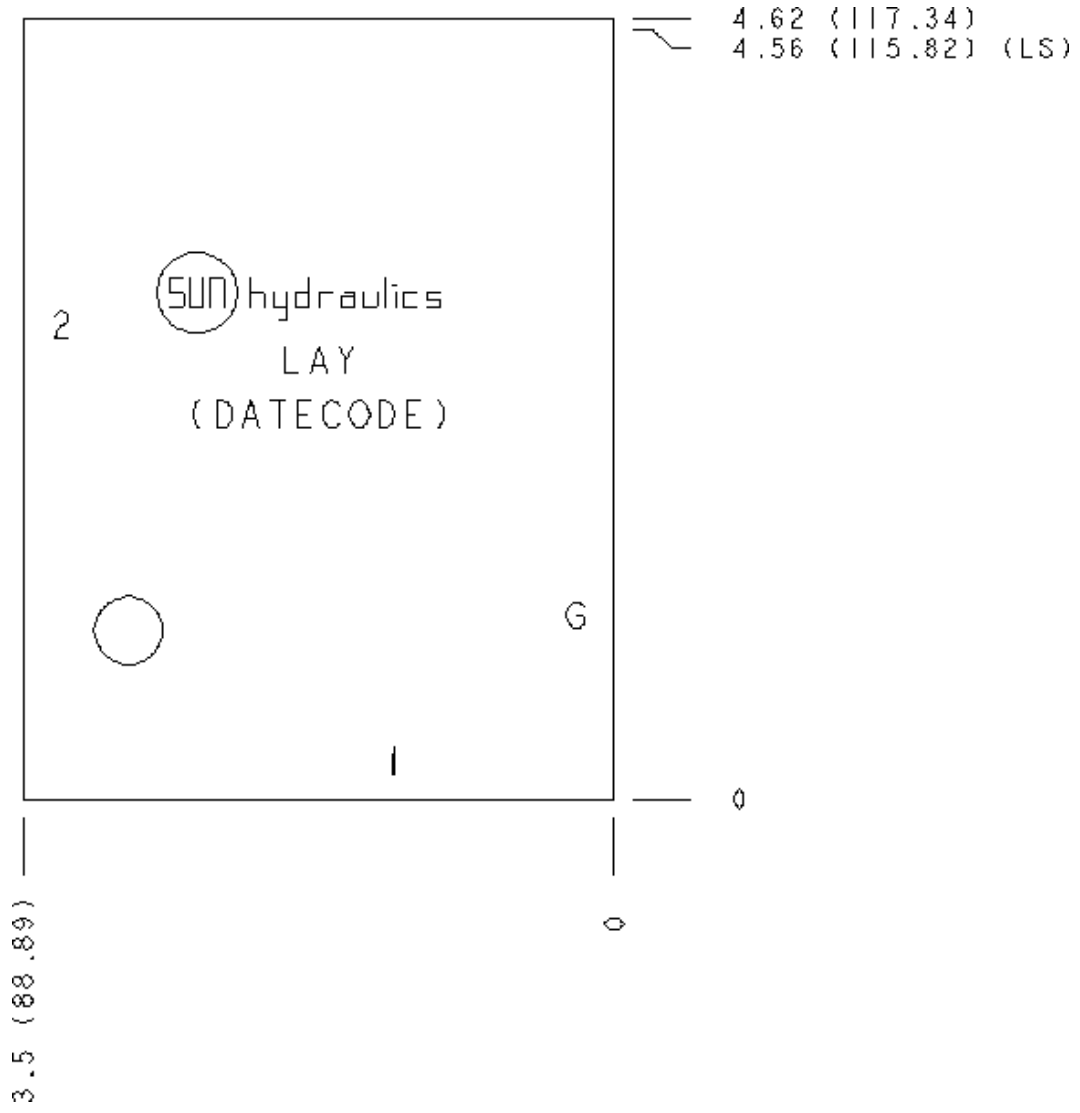
0

3.5 (88.89)

Face 7



Face 8



Face 10

