

## TECHNICAL DATA

Body Type	Line mount
Interface	None
Body Features	Ninety degree
Mounting Hole Diameter	8.6 mm
Mounting Hole Depth	Through
Mounting Hole Quantity	2
Open Cavities	1
Cavity	T-21A
Port Size	1/2" BSPP
Model Weight	0.37 kg.

## NOTES

**Important:** Carefully consider the maximum system pressure. The pressure rating of the manifold is dependent on the manifold material, with the port type/size a secondary consideration. Manifolds constructed of aluminum are not rated for pressures higher than 3000 psi (210 bar), regardless of the port type/size specified.

## PORT DESIGNATORS

Modifiers	Ports
MAV, /S	Ports 1 & 2: 1/2" BSPP; Port 3: 3/8" BSPP; Port 4: 1/4" BSPP;

## CONFIGURATION OPTIONS

Model Code Example: MAV

### MODIFIER

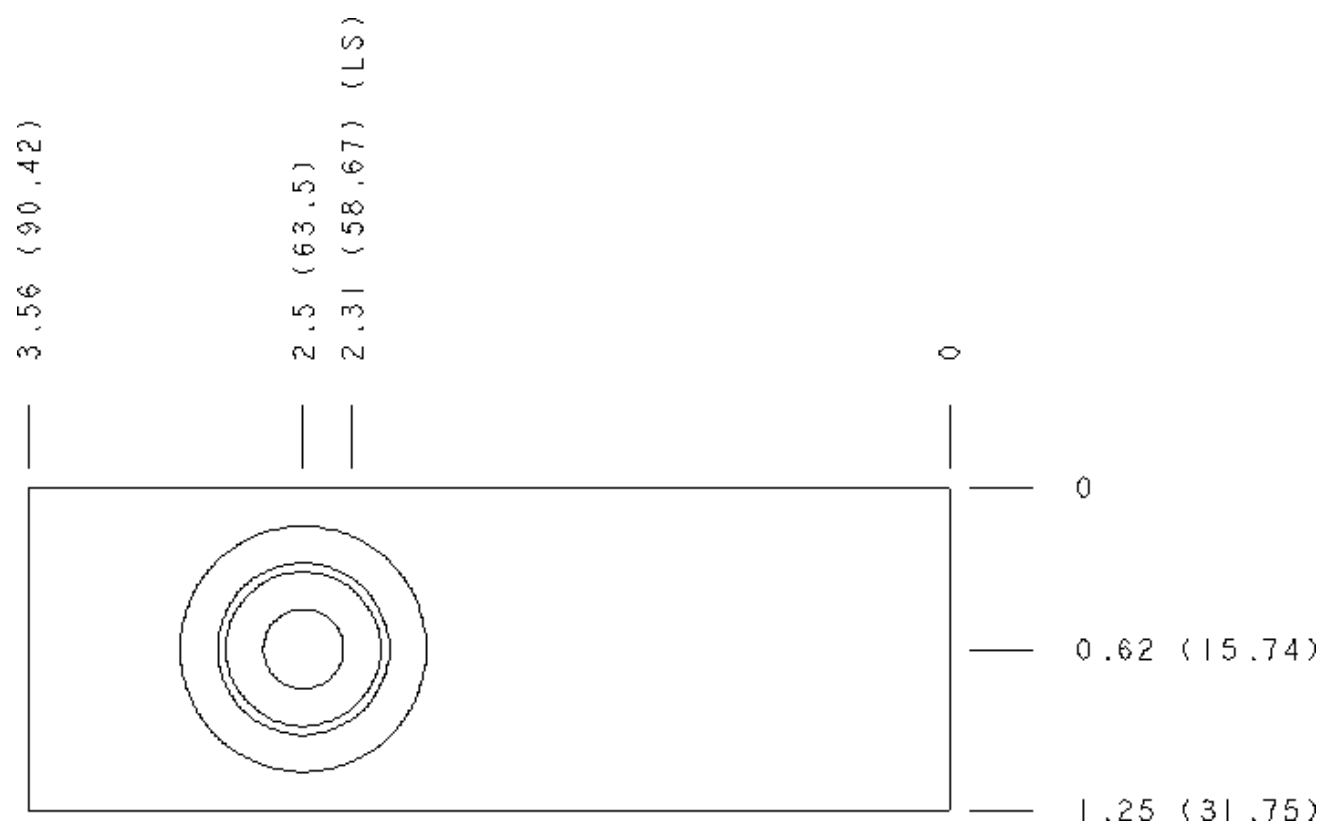
6061-T651 Aluminum, Buna-N  
/S 65-45-12 Ductile Iron, Buna-N, Blackened

## MANIFOLD FACES

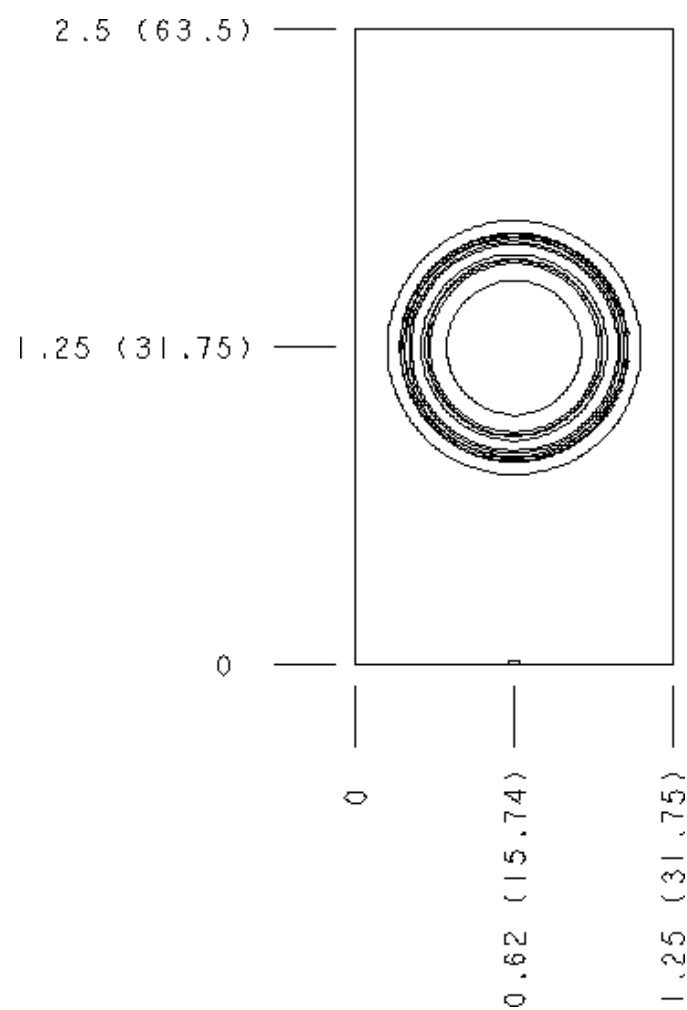
### FACE GRID

1	2	3	4
5	6	7	8
9	10	11	12

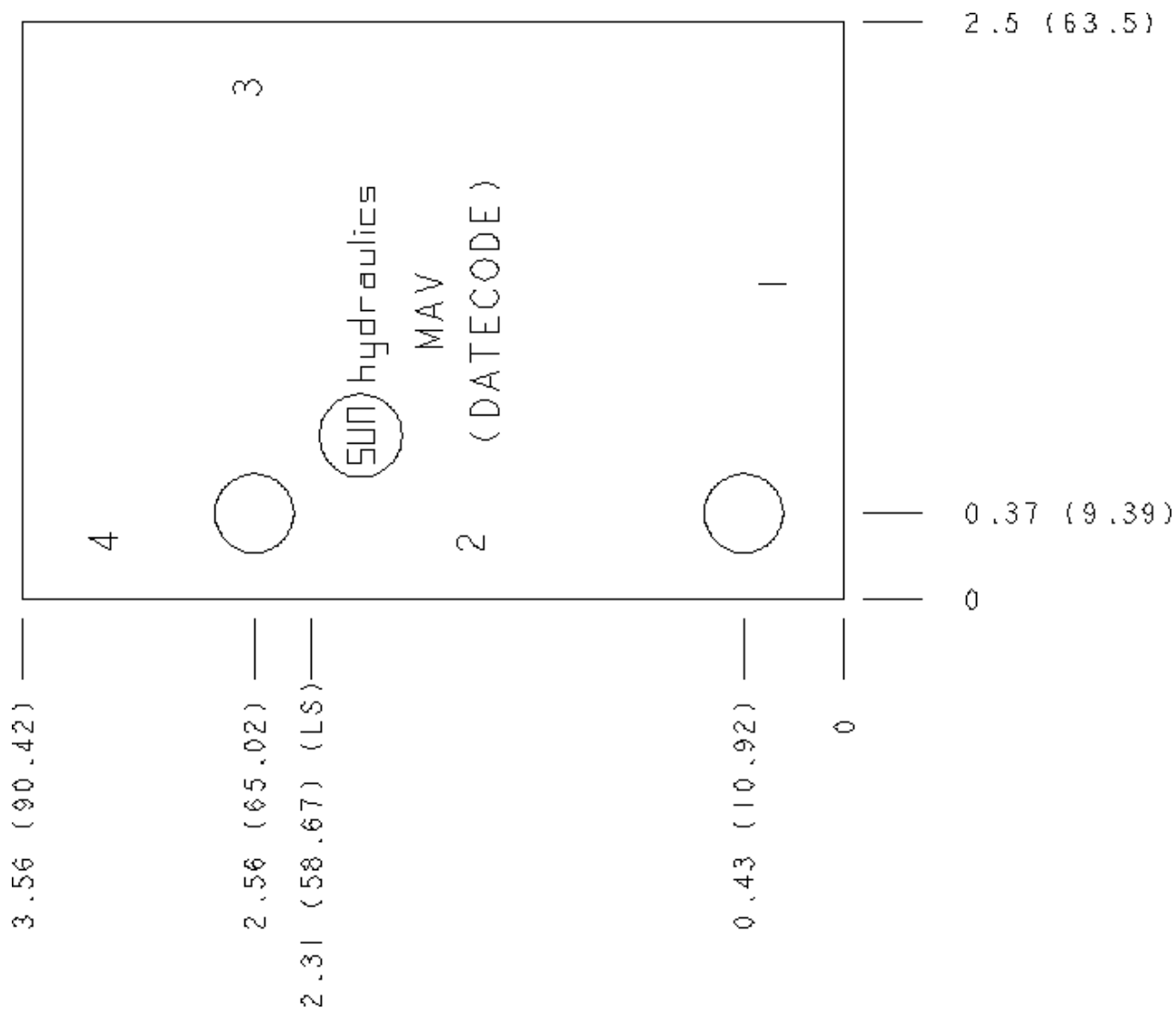
Face 2



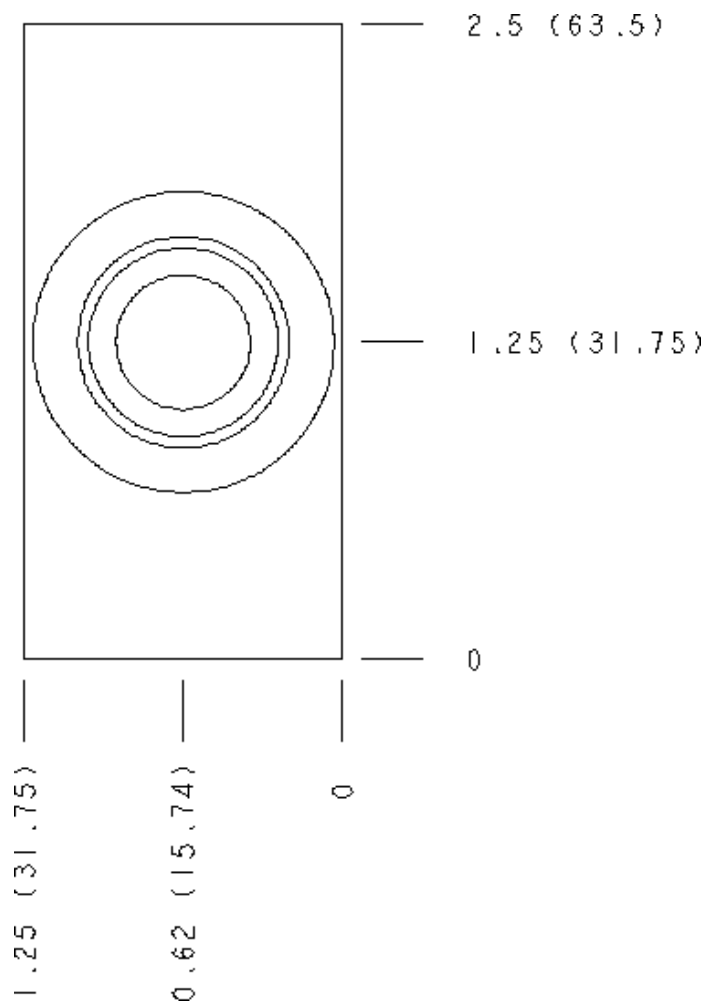
Face 5



Face 6



Face 7



Face 10

