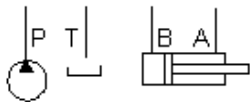


TECHNICAL DATA

Body Type	Sandwich
Interface	ISO 03
Body Features	Adaptor - Switches ports A and B
Stack Height	25 mm
Seal Plate Included (see notes)	Yes

Circuit Saver, Adaptor Block Switching Ports A and B



CONFIGURATION

/Y Modifier 65-45-12 Ductile Iron, Viton, Chem. Black

NOTES

- Stack height value in technical data table includes seal retainer plate.
- Important:** Carefully consider the maximum system pressure. The pressure rating of the manifold is dependent on the manifold material, with the port type/size a secondary consideration. Manifolds constructed of aluminum are not rated for pressures higher than 3000 psi (210 bar), regardless of the port type/size specified.

INCLUDED COMPONENTS

Part	Description	Quantity
500-101-012	O-Ring	4
700-002	Seal Plate	1
811-001-006	Pin	1
A330-106-002	Sub-assembly	2

CONFIGURATION OPTIONS

Model Code Example: ZKX/Y

MODIFIER (Y)

- /Y* 65-45-12 Ductile Iron, Viton, Chem. Black**
- 6061-T651 Aluminum, Buna-N
- /11* 6061-T651 Aluminum, Buna-N, Clear Anodize - Per MIL SPEC 8625F Type II, Class I
- /10* 6061-T651 Aluminum, Buna-N, Black Anodize - Per MIL SPEC 8625F Type II, Class II
- /V* 6061-T651 Aluminum, Viton
- /16* 6061-T651 Aluminum, Viton, Clear Anodize - Per MIL SPEC 8625F Type II, Class I
- /15* 6061-T651 Aluminum, Viton, Black Anodize - Per MIL SPEC 8625F Type II, Class II
- /S* 65-45-12 Ductile Iron, Buna-N, Chem. Black
- /S3* 65-45-12 Ductile Iron, Buna-N, Trivalent Clear Zinc with Top Sealer
- /Y3* 65-45-12 Ductile Iron, Viton, Trivalent Clear Zinc with Top Sealer